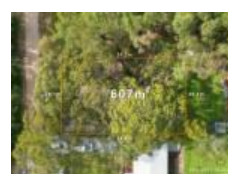
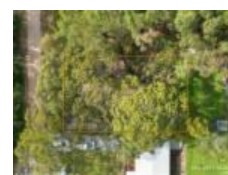


## 34 Diamond St, Russell Island, QLD 4184

Sold - 7/11/2024

Residential Land



### Diamonds are EVERYONES best friend!

Especially when you are stones throw from the water and boast a gorgeous northern outlook.

The Block:

Easements: No

Flooding: No

Bushfire: No

Vegetation: Light

Dimensions: 19.9m x 29.8m

Aspect: North

Views: Bushland residential

Terrain: gentle slope from rear to front

Fenced: no

Road type: good quality dirt (30m to sealed road)

The Location

To Passenger ferry and vehicle barge: 5 min (3.2km)

To Village shopping: 5 min (2.km)

To Bay Islands Aquatic Centre: 4 min (2.7km)

To Primary School: 4 min (2.5km)

To Russell Island RSL: 5 min (3.5km)

To Russell Island Bowls Club: 3 min (2.2km)

To Jock Kennedy Boat Ramp: 5 min (3.4km)

To Russell Island Boat Ramp (Wahine Drive): 5 min (3.7km)

To Sandy Beach Recreational Reserve: 8 min (6.2km)

For a copy of the Develo report containing information regarding all overlays and utility placements, just hit the enquire button now.

Russell Island is part of Redland City, Queensland and the largest of the Southern Moreton Bay Islands. It has a length of 8 kilometers and width of nearly 2

Listed By

The Office

Phone: (07) 3286 2500

Open for Inspection

By Appointment.

