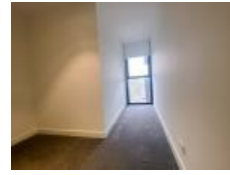


311/288 Albert St, Brunswick, VIC 3056

Leased - \$600

Apartment 2  1 



Stylish 2-Bedroom Apartment in Brunswick - Available for ren

Live in the center of it all with easy access to everything Brunswick has to offer. Walk out of 288 Albert Street and find everything you need within easy reach. Adjacent to Woolworths, it's walking distance to trendy Sydney Road eateries/shops, city-bound trams, Brunswick Station/Baths, RMIT, fresh produce and leafy Gilpin/Clifton Parks.

Open for Inspection

By Appointment.

This cozy apartment features two well-appointed bedrooms with ample natural light and built-in robes, a stylish bathroom, an open plan living and dining area, and a fully equipped kitchen. With ample natural light, contemporary finishes, and a balcony with a stunning view where you can enjoy your morning coffee or unwind after a long day.

Features:

- Well-appointed kitchen with quality appliances
- Intercom entry
- lift access
- Car space and storage cage
- Large communal rooftop area complete with beautifully landscaped garden beds, seating, kitchenette, and BBQ

*****Arranging an inspection is easy!*****

To book a time to inspect, simply click on the Book an Inspection Time button OR click Contact Agent, email through your details so we can reply with available appointment times for you to register to inspect. By registering, you will be INSTANTLY informed of any updates, changes or cancellations for your appointment.

Listed By

Rebecca Halton

Mobile: 0448 843 311

