

31/11-17 Watson St, Neutral Bay, NSW 2089

\$860

Unit 2  1 



Peaceful 2 Bedroom Apartment in an Exceptional Location

This light-filled 2 bedroom apartment has been completely renovated and is perfectly located on the sixth floor of the popular Watson Towers security complex. It offers south-facing views of the city skyline. This property is a short walk being 3 minutes to city buses with only one stop to the City as well as local shops, cafes and schools. Featuring:

Open for Inspection

By Appointment.

Near new kitchen with Caesarstone benchtop, dishwasher, and large pantry
Hybrid timber flooring throughout the apartment
Open-plan living area with balcony access
Spacious master bedroom with new built-in and terrace access
Second bedroom with built-ins
Renovated Bathroom with shower, wc, and laundry
Secure access to undercover car space and visitors' parking
Outdoor residents' pool with a paved sundeck.
The living area is 103.7 sqm, Total area is 118 sqm
Available 10/10/2025

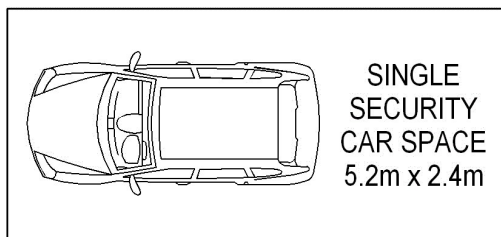
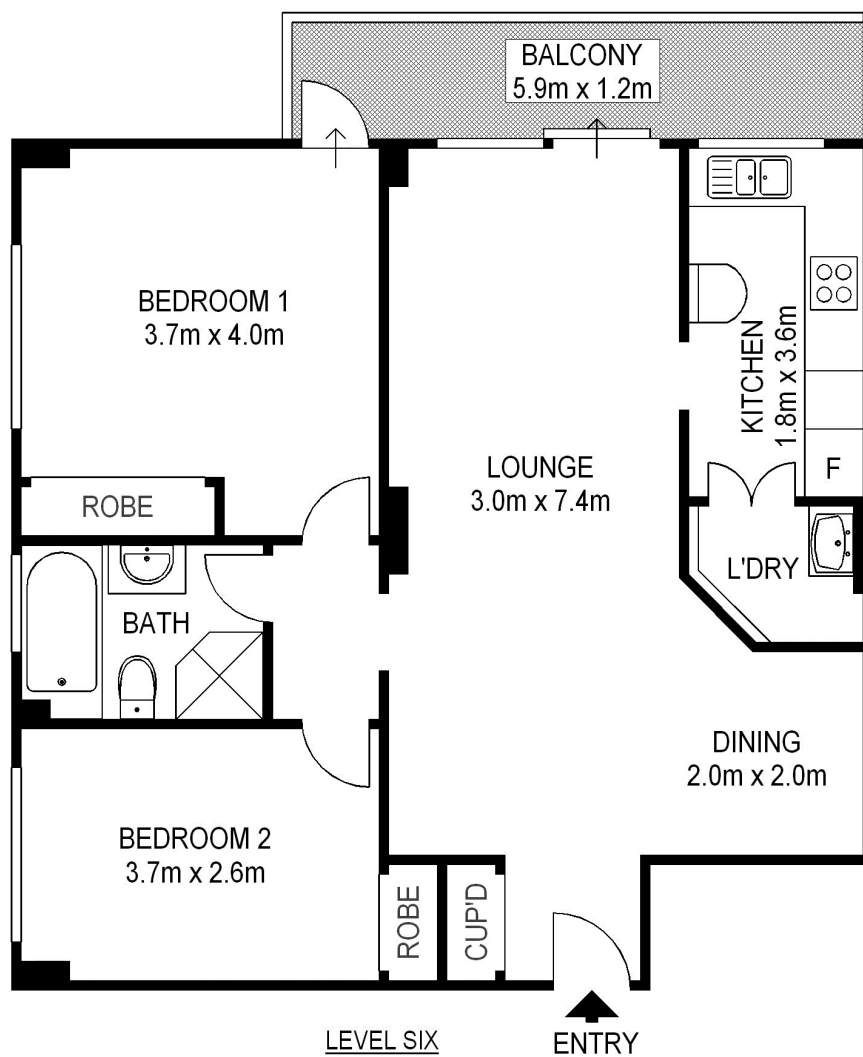
Listed By

The Office

Phone: (02) 9908 9090



Floorplan



BASEMENT



Scale shown in metres. All dimensions herein are approximate and gathered from sources believed to be reliable. Whilst every effort is made for the accuracy of our floor plans, interested parties should rely on their own enquires. Floor Plans by Industrie Media. www.industriemedia.com.au

S1

31/11-17 Watson Street, Neutral Bay