

309/66 Slobodian Ave, Eight Mile Plains, QLD 4113

Sold - 1/05/2024

Apartment 1  1  1 



SOLD BY EMILY XIONG

Immerse yourself in this pristine, modern one-bedroom apartment in Eight Mile Plains, which emphasises leisurely, low maintenance living. Designed for the discerning, this residence boasts a generous open plan living and dining area, replete with a built-in study nook, stylish kitchen with stone counters, and air conditioning for ultimate comfort. Outside, an expansive balcony allows you the opportunity to soak in the stunning district and tree-top views, an ideal backdrop for entertaining or relaxation, while a communal rooftop barbecue area awaits your larger gatherings. Catering perfectly to professionals, commuters, and students alike, this abode is situated conveniently above a medical centre and just a short stroll from the bustling Eight Mile Plains bus station, promising a lifestyle of ease and sophistication.

Open for Inspection

By Appointment.

Key Features:

- Modern apartment with spacious open plan living, air conditioning, and built-in study nook.
- Stylish kitchen with stone counters, glossy cabinetry, and dishwasher.
- Large balcony with beautiful district/tree-top views, perfect for entertaining, plus communal rooftop barbecue area.
- One carpeted bedroom with air conditioning and mirrored robe, plus one modern bathroom.
- Prime location, right above a medical centre and near Eight Mile Plains bus station, ideal for professionals, commuters, and students.

Discover the perfect blend of convenience and lifestyle in Eight Mile Plains. Located directly above a medical centre and within walking distance to parks, shops, and the Eight Mile Plains bus station, this apartment is ideally positioned for swift commutes to Brisbane CBD and surrounding universities. A quick stroll takes you to Brisbane Technology Park, offering ample career advancement opportunities, while just minutes away, Westfield Mt Gravatt presents an array of fine dining, entertainment, and designer shopping experiences.

- 240 m to McKinlay-Davey Park
- 400 m to Eight Mile Plains Park n Ride Bus Station
- 1.1 km to Brisbane Technology Park
- 1.7 km to Eight Mile Plains Shopping Centre
- 2.8 km to Westfield Mt Gravatt

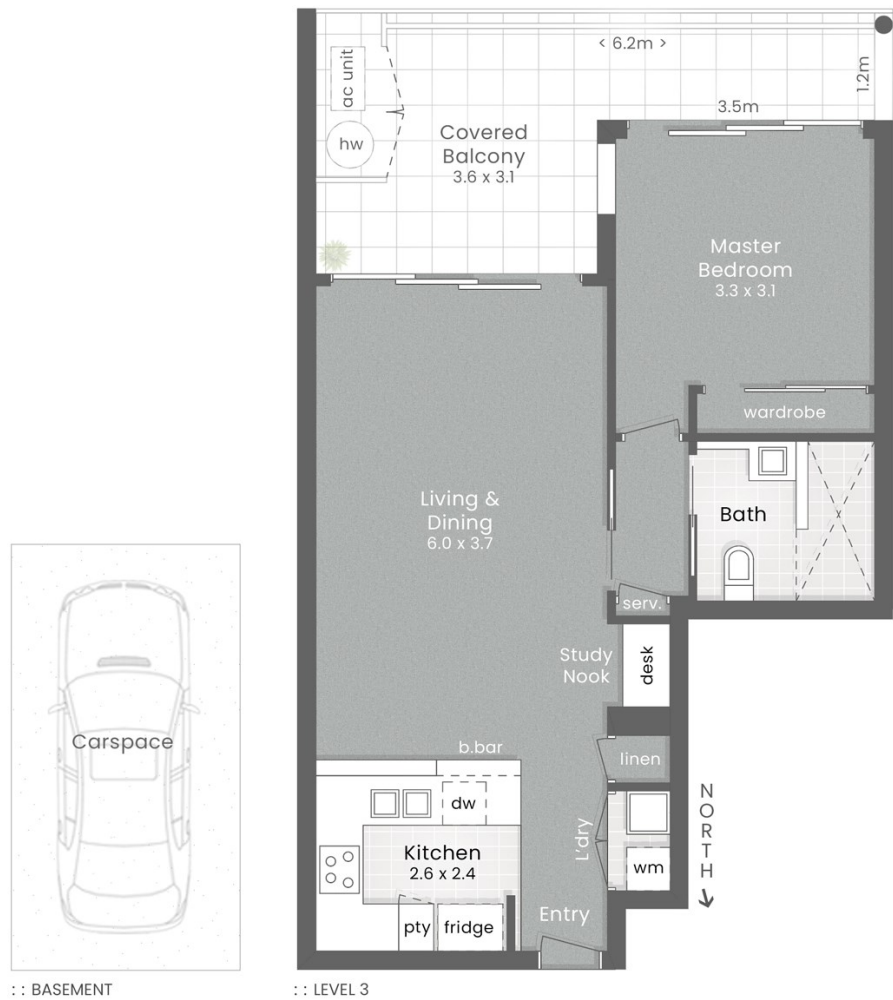
Nestled in a contemporary apartment building, this abode sits just above a variety of shops and services. It offers a secure car park and features a communal

Listed By

Emily Xiong

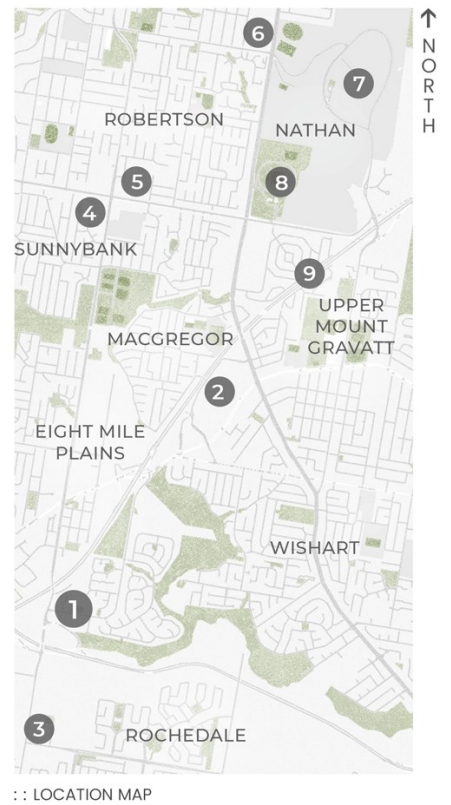


Floorplan



Points of Interest

1. GATEWAY - AT CENTRUS
2. Westfield Garden City
3. Rochedale Shopping Village
4. Market Square
5. Sunnybank Plaza
6. QEII Jubilee Hospital
7. Griffith University Nathan Campus
8. Nissan Arena



GATEWAY - AT CENTRUS

309/66 Slobodian Avenue EIGHT MILE PLAINS

1 Bed + Study Nook 1 Bath 1 Car

Internal 59m² | Balcony 18m² | Total 77m²

LJ Hooker
Property Partners

DISCLAIMER: This is not a legal document therefore all measurements and information provided is subject to survey. No permission is given to use or alter this Floor Plan without the consent of Pure Design Concepts. The overall presentation style, layout, imagery, fonts, background, colours and terminology has been originally created by PDC and is subject to strict copyright. No ownership is taken of building design. Find out more at puredesignconcepts.com.au

pdc.