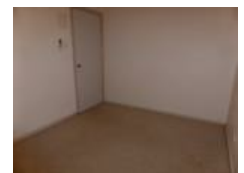


30 Rutherford Rd, South Hedland, WA 6722

Leased - \$800

House 3  1 



3 Bedroom home with abundance of parking

Discover the perfect blend of comfort and convenience with this inviting 3-bedroom property, ideally situated just a short distance from all South Hedland amenities, including shops and restaurants.

Open for Inspection

By Appointment.

Key Features:

?? Great Outdoors: Enjoy the spacious outdoor area with large fences providing added security. The property boasts an abundance of secure parking, a large lawned area, and garden beds to the rear, creating a serene and inviting atmosphere.

??? Modern Kitchen: Step inside to find an open-plan lounge and kitchen, designed for both functionality and style. The kitchen features ample storage and workspace, making meal preparation a breeze. Additionally, relish the convenience of a large walk-in pantry for all your storage needs.

?? Comfortable Bedrooms: Three generously sized bedrooms provide ample space for rest and relaxation.

Additional Features:

?? Split Air-Conditioning: Stay cool and comfortable year-round with split air-conditioning units placed throughout the property.

?? Secure Storage Shed: A handy outside storage shed adds practicality to the property, providing space for tools, equipment, or additional storage needs.

Location: Conveniently located close to South Hedland's amenities, this property offers easy access to shops, restaurants, and more, ensuring a lifestyle of convenience and comfort.

Listed By

Caine Otley

Phone: (08) 9140 1284

Mobile: 0400 565 425

