

3 Nattai Ct, Thornleigh, NSW 2120

Sold - 23/12/2011

House 4 2



Private Bushland Setting - THANK YOU MR HOOKER!

Set on the high side of the street amid a bushland setting, this neatly presented dual level family home set in a cul-de-sac setting offers easy care living and entertaining, the home is a close to local primary school, parks and reserves.

Open for Inspection

By Appointment.

- . Combined light lounge and dining with reverse cycle a/c
- . Modern kitchen with Bosch appliances, ample storage and bench space
- . All upstairs bedrooms feature built-in robes and reverse cycle air conditioning
- . Main bedroom has ensuite and private balcony with pleasant outlook
- . Large rumpus downstairs with adjoining fourth bedroom/study
- . Covered entertainers' balcony with leafy outlooks
- . Neutral décor throughout
- . Oversized double carport, internal laundry
- . Wonderful vista from backyard
- . Handy to quality schools and parks

To view a video of this property, please visit the following link(cut-and paste into your browser)

<http://www.youtube.com/user/ljhookersydneynorth#p/u/0/US3pJd7QEsk>

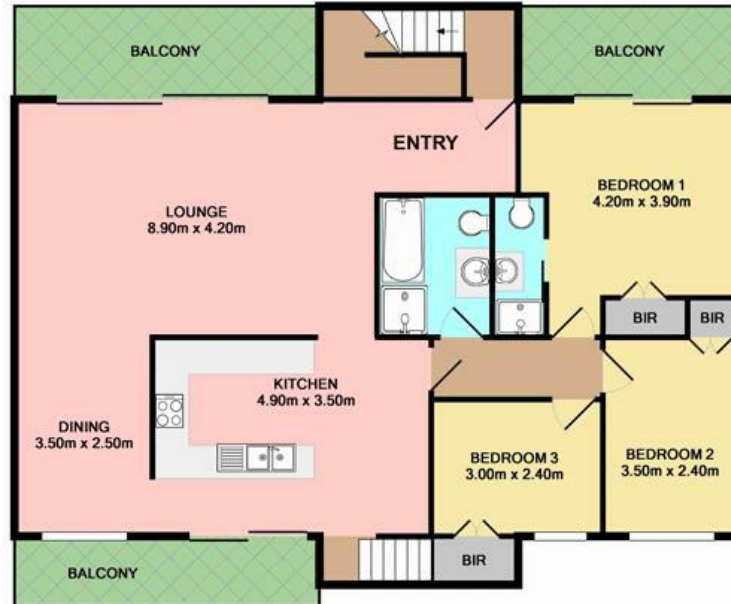
Listed By

Geoff Kaslar
Phone: (02) 9875 5722
Mobile: 0438 808 022

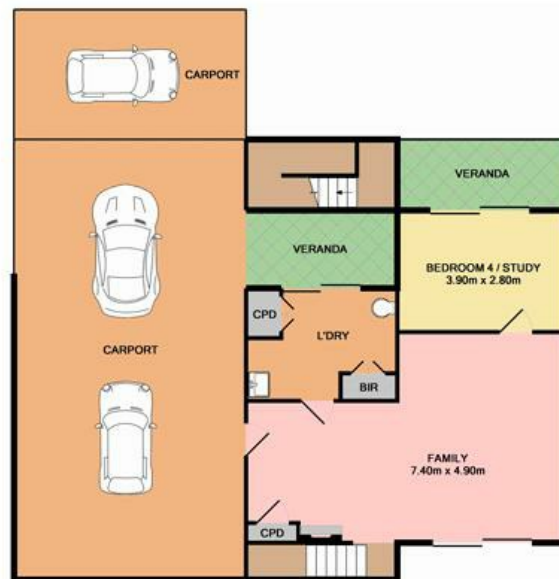


Floorplan

3 Nattai Close, Thornleigh



First Floor



Ground Floor

Disclaimer:
Measurements are approximate and not to scale.
Illustrative and promotional purposes only.
No Liability will be accepted.

