

3 Medinah Pt, Medowie, NSW 2318

Contact Agent

House 4 2 2



PICK OF THE CROP

Well, where do we start? We could start with the fact this home is located in a gated cul-de-sac within the ever popular Pacific Dunes Golf and Country Club.

Do we start by pointing out this sizeable family home is situated on a huge block of over 900sqm and overlooks the 15th green?

Or perhaps it's the family friendly layout, quality inclusions and high end finishes?

In fairness where we start isn't important when compared to who finishes up securing this gorgeous family home. Our vendor has committed to relocating closer to family and needs to jump this last hurdle before she can move.

All information contained herein is gathered from sources we consider to be reliable. However, we, LJ Hooker Nelson Bay cannot guarantee or give any warranty about the information provided. Interested parties must solely rely on their own enquiries. Any personal information given to us during the course of the campaign will be kept on our database for follow up and to market other services and opportunities unless instructed in writing. View our privacy policy here - <https://www.ljhooker.com.au/legals/privacy-policy>

Open for Inspection

By Appointment.

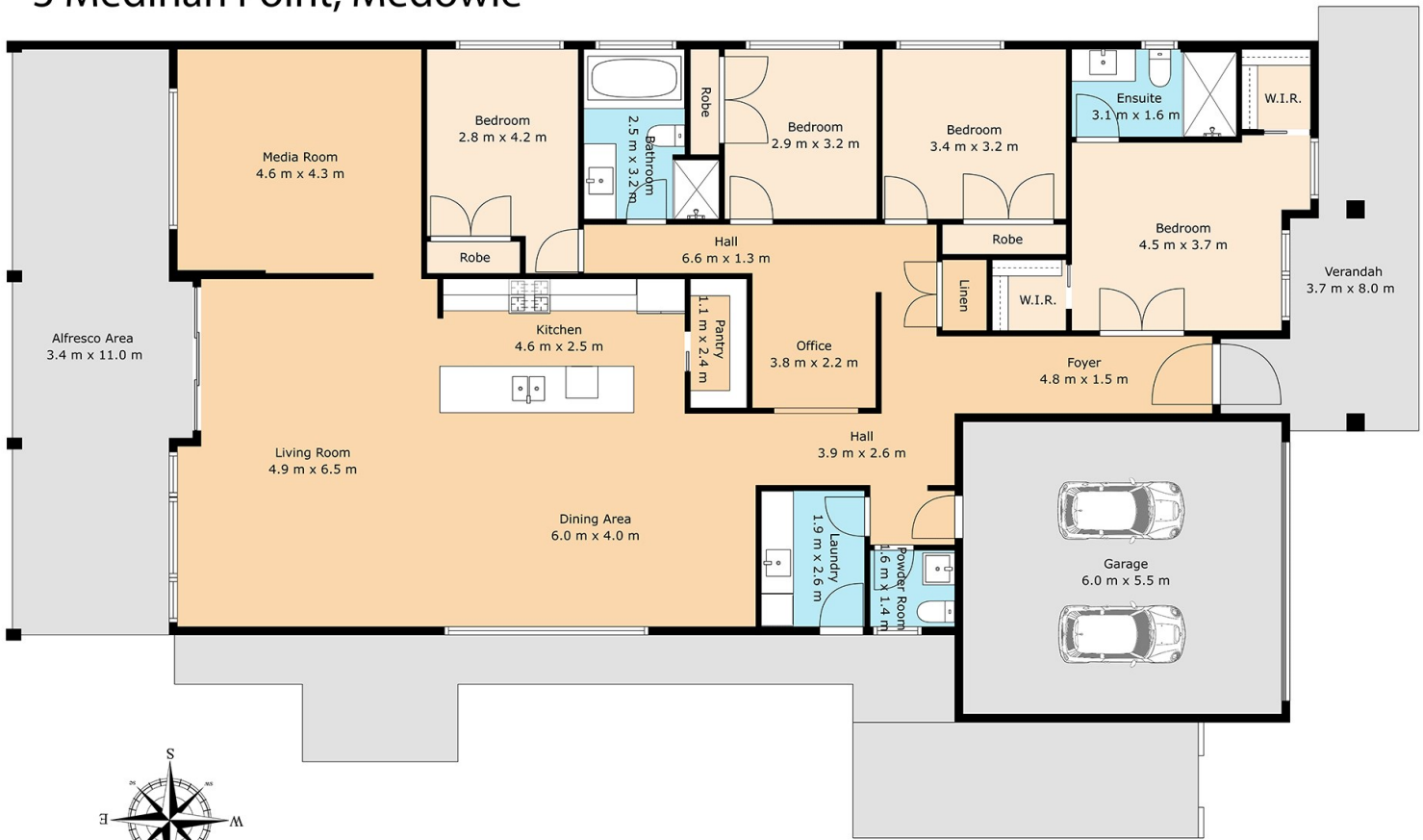
Listed By

Jason Brennan
Phone: (02) 4984 2400
Mobile: 0419 691 377



Floorplan

3 Medinah Point, Medowie



Total: 198 m²

1st Floor: 198 m²

Excluded Areas: Garage: 33 M², Alfresco Area: 34 M²

Verandah: 19 M², Walls: 12 m²

 ALL SIZES, DIMENSIONS & ELEMENTS ARE APPROXIMATE & INTENDED FOR VIEWING PURPOSES ONLY
© 2026 Rite Angle Media - All rights reserved
www.riteanglemedia.com.au


Medowie