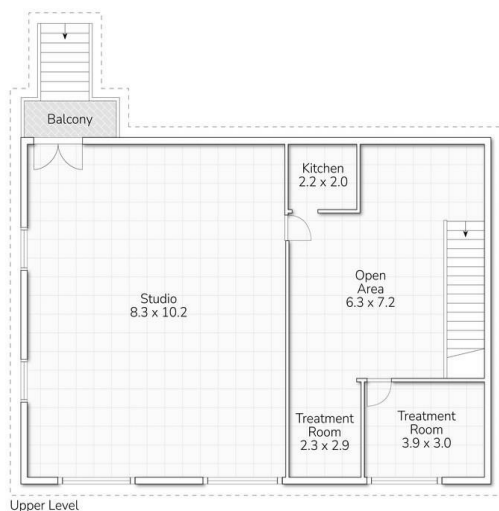


3/111 Scarborough St, Southport, QLD 4215

Contact Agent

Retail Shop



Upper Level

111 SCARBOROUGH STREET, SOUTHPORT

Internal 159m² | External 4m² | Total 163m²

This floor plan is for marketing purposes only. Dimensions and layout are approximate. Mountfort Media gives no guarantee or warranty over the accuracy of this plan.

High Exposure Corner Position | Scarborough Street, Southpor

Position your business in the heart of Southport with this well-located commercial tenancy at 3/111 Scarborough Street.

Open for Inspection

By Appointment.

Occupying a prominent corner position, this property offers excellent visibility and signage opportunities in a high-traffic area, making it ideal for a range of professional, medical, retail, or service-based users (STCA).

The tenancy is complemented by the convenience of two (2) on-site car parks, a valuable asset in this tightly held precinct, ensuring easy access for staff and clients alike.

Located within Southport's established business and commercial hub, the property benefits from close proximity to the Southport CBD, courthouse, Australia Fair, public transport, and major arterial roads.

Key features include:

- Prime corner block with strong street presence
- Excellent exposure to passing traffic
- Two on-site car parks
- Flexible layout suitable for multiple business uses (STCA)
- Central Southport location close to amenities and transport
- Opportunity to secure corner commercial space with parking in this location are rare.

Enquire today to arrange an inspection or discuss leasing terms.

Disclaimer: Whilst every effort has been made to ensure the accuracy of the information above, no warranty is given by the vendor or agent as to its accuracy. Interested parties should not rely on this information as statements or representations of fact and must satisfy themselves by inspection or otherwise.

Listed By

LJ Hooker Southport

