

2853/1-5 Cremin St, Upper Mount Gravatt, QLD 4122

Sold - 23/09/2024

Apartment 2  2  1 



## SOLD BY KEVIN AHN & SIENNA KIM

For unrivalled proximity to all the southside has to offer - vibrant retail and restaurant hubs, excellent schooling and tertiary resources, entertainment venues and easy access to motorways to get you into and around Brisbane, you'll be pressed to find better than this sky-high two-bedroom apartment in the resort-style skygardens complex - complete with a single car space and basement storage.

### Highlights:

- Top floor (level 8) position in the highest complex in the area equals breathtaking vistas
- Chic fit-out with large format tiles in living/dining/kitchen and hybrid timber floors to beds
- Dual access through glass sliders to a big covered alfresco balcony with glass balustrade
- Use of fully maintained onsite recreational facilities: heated pool, spa, sauna, BBQ area
- Walk to city-Xpress buses & Westfield Mt Gravatt (Garden City) for food, fashion and movies

We love the floorplan of this spacious apartment which opens directly into a lusciously tiled study area off the main entry and flows seamlessly into a combined kitchen/living/dining zone and onto the balcony through a set of sliders.

A split-system reverse cycle AC unit can keep this high-use social zone just the temperature you like as you laze on the couch, entertain over the dining table or cook up a storm in the designer kitchen with its stone benches, crisp white and timber-toned cabinetry, feature pendant lighting over the dining bar, and shiny, stainless steel appliances (dishwasher, gas cooker, oven and rangehood).

Both bedrooms have air conditioners & ceiling fans and are spaced at either end of the apartment for maximum privacy. The master opens onto the balcony plus a walk-through-robe into an elegantly tiled ensuite with generous shower recess.

The second bedroom has a full wall of built-in robes and use of the second bathroom which houses a shower/bath combo, vanity, toilet and laundry station.

Nothing beats living right up top in an apartment complex and here you get that prized position and the outstanding views it offers across the south from both your personal tiled balcony - big enough at just over 13m2 to comfortably fit a dining setting for four - as well as the building's communal leisure deck housing the heated in-ground pool with slide and a fab BBQ station for when you're hosting bigger gatherings.

### Listed By

Kevin Ahn  
Phone: (07) 3344 0288  
Mobile: 0488 088 599

Peter Crowther  
Phone: (07) 3344 0288  
Mobile: 0411 866 008



### Open for Inspection

By Appointment.

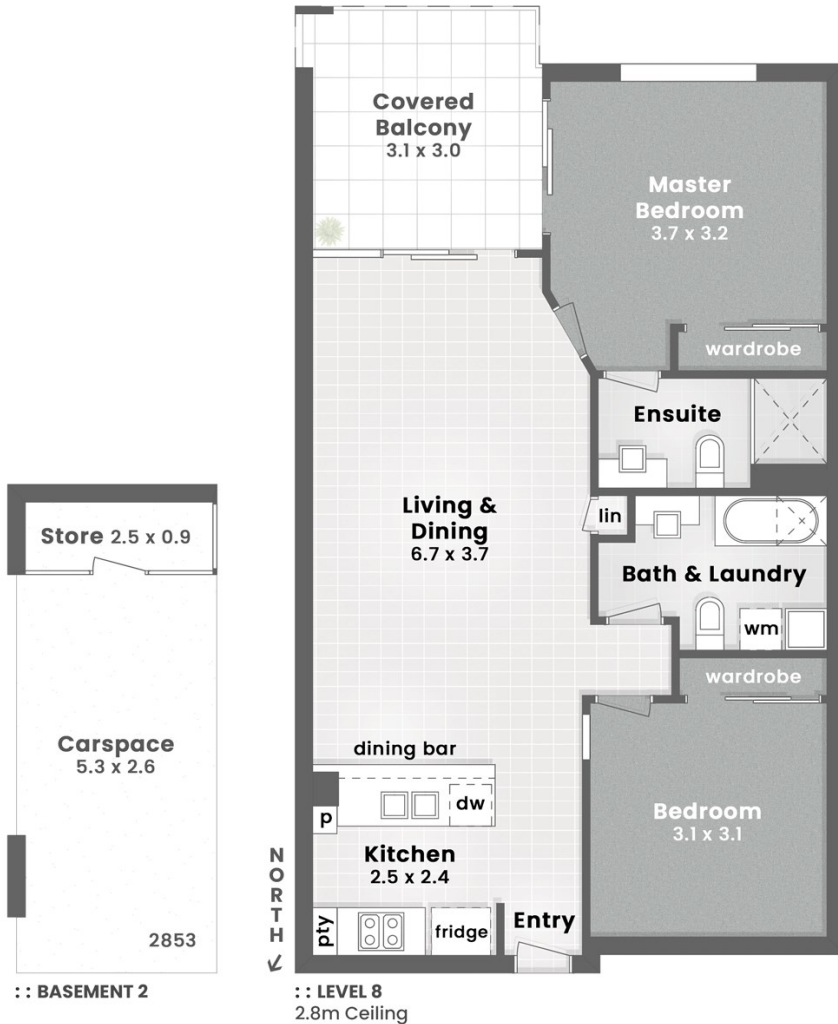
## Floorplan

### Points of Interest

1. SKY GARDENS
2. Westfield Garden City
3. Rochedale Shopping Village
4. Market Square
5. Sunnybank Plaza
6. QEII Jubilee Hospital
7. Griffith University Nathan Campus
8. Nissan Arena



:: LOCATION MAP



**LJ Hooker**  
Property Partners

**SKY GARDENS** | 2853/1-5 Cremin Street  
**UPPER MOUNT GRAVATT**

2 Bed 2 Bath 1 Car + Store

Internal 75m<sup>2</sup> | Balcony 10m<sup>2</sup> | **Total 85m<sup>2</sup>**

Carspace & Store 16m<sup>2</sup>

**DISCLAIMER:** This is not a legal document therefore all measurements and information provided is subject to survey. No permission is given to use or alter this Floor Plan without the consent of Pure Design Concepts. The overall presentation style, layout, imagery, fonts, background, colours and terminology has been originally created by PDC and is subject to strict copyright. No ownership is taken of building design. Find out more at [puredesignconcepts.com.au](http://puredesignconcepts.com.au)

**pdc.**