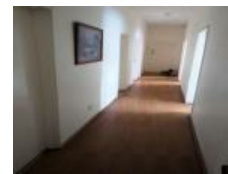


284 Warialda St, Moree, NSW 2400

\$330,000 - \$330,000

House 3  2  2 



Room to move

This 3 bedroom home is located in East Moree opposite Jellico Park on a massive 1631 sm block. Featuring a gauzed verandah on 2 sides, bathroom with a second shower and toilet, reverse cycle A/C throughout.

Large kitchen with adjacent living room.

Undercover parking for 2 vehicles.

Views across to Jellicoe Park and within walking distance to the Moree RSL club.

Open for Inspection

By Appointment.

Listed By

Anthony Sullivan

Phone: (02) 6752 1161

Mobile: 0400 621 928

