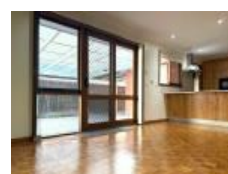


28 Oakdene Grove South Sth, Altona Meadows, VIC 3028

Leased - \$600

House 4  2 



Ideal Family Living in a Prime Location! APPLICATIONS NOW OP

The Property

LJ Hooker Property Point presents 28 Oakdene Grove South, Altona Meadows. This spacious and well-maintained four-bedroom, two-bathroom home is set on a generous 672sqm (approx.) block. Featuring multiple living areas, a well-equipped kitchen, and a large backyard. Positioned in a quiet, sought-after location, it is close to schools, shops, and transport links, ensuring convenience and lifestyle appeal.

Open for Inspection

By Appointment.

The Point of Difference

- The main bedroom is a private retreat, complete with a walk-in robe and ensuite, while three additional family-friendly bedrooms are serviced by a central bathroom, providing ample space and comfort for the entire household.
- A well-appointed kitchen and dining area feature polished parquetry flooring, quality appliances, ample storage, and generous bench space, creating a warm and functional hub for family meals and entertaining.
- Multiple living zones, including a spacious lounge and open plan dining and family area, offer substantial proportions, allowing for both relaxation and entertainment in a versatile layout.
- Outdoor entertaining is effortless with a covered pergola and a carport, seamlessly extending the living space while providing a comfortable setting for gatherings and weekend barbecues.
- The expansive backyard features a garden shed, and lush greenery, offering plenty of space for children to play.
- Additional highlights include a large separate laundry, heating and cooling for year-round comfort, and secure off-street parking, ensuring practicality and convenience.

The Point of Interest

Located in a family-friendly pocket of Altona Meadows, this home is within proximity to Central Square Shopping Centre, scenic parklands, and public transport options. With easy access to the Princes Freeway and local amenities, it provides both lifestyle and investment appeal. As of 3rd April 2025, the property is zoned for Altona Green Primary School and Altona Meadows Primary School for primary education, and for secondary education, it falls within the zone for Laverton P-12 College, making it an excellent choice for families.

Note. All stated dimensions are approximate only. Particulars given are for general information only and do not constitute any representation on the part of the vendor or agent. Any school zoning stated is based on www.findmyschool.vic.gov.au as of 03/04/2025. Identification is required on entry to all private and public inspections.

Listed By

Dema Haddad

Mobile: 0487 555 700

