

28 Koombala Gr, Cordeaux Heights, NSW 2526

Sold - \$525,000

House 4 2



Panoramic Views

Well presented tri level double brick and tile home with a northern aspect featuring four bedrooms two bathrooms, rumpus and teenagers retreat. Three of the four bedrooms have mirrored built-in wardrobes and are on the upper level with the three way bathroom. New custom designed kitchen with dishwasher and gas cooking, comfortable lounge/dining area which features raked cathedral ceilings and opens onto a full width wrap around deck just perfect for barbecues and entertaining. Downstairs consists of the fourth bedroom, second bathroom, rumpus and teenage retreat/office/study with its own separate entry door. Fully fenced backyard with level children play area and established gardens, water tank and a sparkling pool for summer. Double garage with two remote control doors and easy internal access to the house. This property is positioned in a low traffic cul-de-sac on an 870 square metre block in a handy spot, close to schools, shops and transport – this home is the perfect fit for any young family.

Open for Inspection

By Appointment.

- * Tri level double brick & tile home with northern aspect
- * Four bedrooms (three with built in robes) & two bathrooms
- * New custom designed kitchen with dishwasher
- * Lounge / dining with raked cathedral ceilings
- * Full width wrap around deck, perfect for entertaining
- * Downstairs has rumpus and teenage retreat
- * Sparkling pool on landscaped 870m2 block
- * Double remote control garage with internal access

Direct enquiries to Renee Lambert on 0418 423 636 or renee.lambert@fanning.com.au

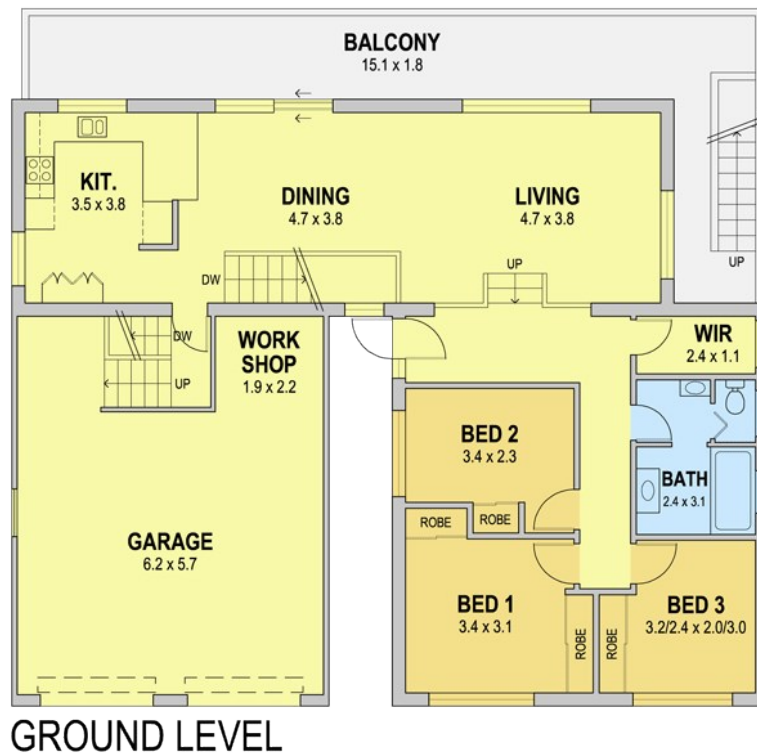
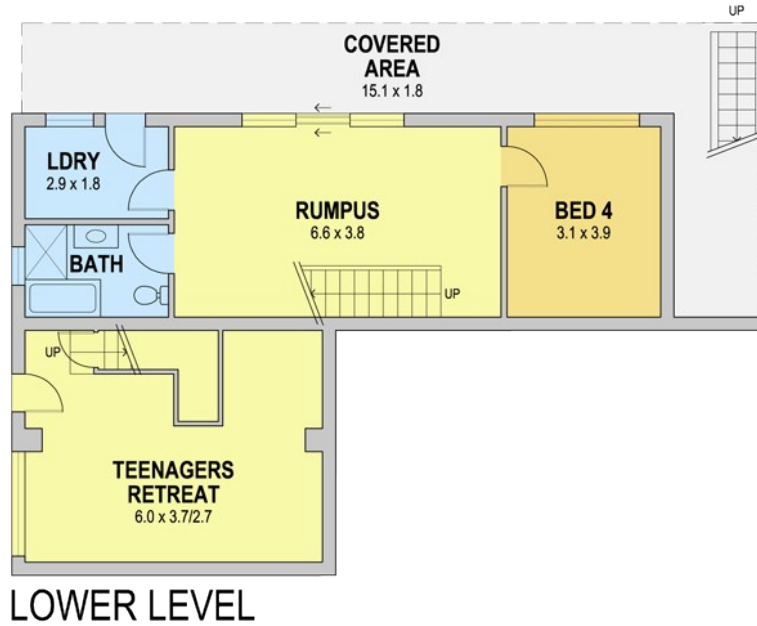
Age - 24 years (approx)
Land Size - 870.6 m2
Dim - 16.5 / 19.5 x 44.6 / 44.32
Council Rates - \$1,380.40pa
Water Rates - \$684.44pa + usage
Potential Rent - \$480 to \$500 per week
Internal Living - 237m2

Listed By

Renee Lambert
Phone: (02) 4228 2555
Mobile: 0418 423 636

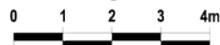


Floorplan



28 Koombala Grove, Cordeaux Heights, NSW

Residence Area: 334m² (approx.)
 Internal Living Area: 237m² (approx.)



Disclaimer: Design Junkies Graphic Imagery whilst preparing this document for the use by The Real Estate Products Group Pty Ltd clients used our best endeavours to ensure that the information contained in this document is true and accurate, but accept no responsibility and disclaim all liability in respect of any errors, omissions, inaccuracies or mis-statements contained in this document. Prospective purchasers should make their own enquires to verify the information contained in this document. Residence Area includes all external walls, outdoor areas and outdoor structures.