

27 - 29 The Crescent , Fairfield, NSW 2165

CONTACT AGENT

Medical/Consulting



DOUBLE RETAIL SHOP - 2 STREET ACCESS

A well located property within the CBD of Fairfield and opposite the Fairfield Railway Station. It comprises 2 adjoining single storey shops with rear access and would suit a variety of uses. An ideal situation for Doctors to create a SUPER MEDICAL CENTRE or the Developer to develop a ground floor Medical Centre and up to 8 storeys of redevelopment into units or Boarding House S.T.C.A.

SUIT:

- MEDICAL CENTRE
- REDEVELOPMENT - HIGH RISE
- LARGE SHOP OR OFFICES
- SUBDIVIDE INTO 2 SHOPS
- SHOP-TOP HOUSING

ZONING: MU1 - Mixed Uses

Area: 580sqm approx.

Floor Area: 560sqm approx.

Height Limit: 28m approx.

FSR: 3:1

DISCLAIMER

We have in preparing this information used our best endeavours to ensure that the information contained therein is true and accurate however, we accept no responsibility and disclaim all liability in respect of any errors, inaccuracies or misstatements contained herein. Prospective buyers should make their own enquiries to verify the information contained herein.

Open for Inspection

By Appointment.

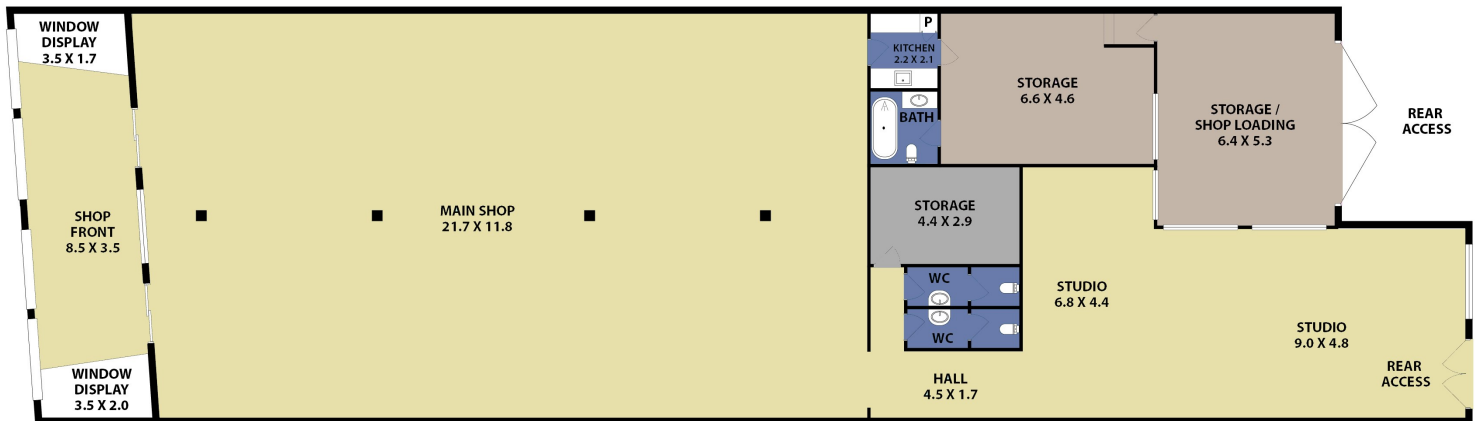
Listed By

Binh Huynh

Binh Huynh



Floorplan



27 The Crescent, Fairfield

Floor plan produced by ENFORCEFX.COM - All measurements are approximate. Floor plan is not to scale. All information contained here is believed to be reliable, however we cannot guarantee the accuracy and interested persons should rely on their own enquirers.

