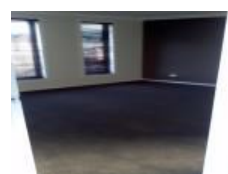


26 Verdelho Dr, Tamworth, NSW 2340

\$690 per week

House 4  2  2 



Four Bedroom Home - Windmill Hill Estate

This spacious four-bedroom family home is ideally located in Windmill Hill, offering comfort and convenience.

Features include:

- Master bedroom with walk-in robe and ensuite
- Three additional bedrooms with built-in robes
- Open-plan kitchen with separate dining and family room
- Formal lounge room
- Main bathroom with bath
- Ducted evaporative cooling throughout
- Three gas points for year-round comfort
- Large covered alfresco area, perfect for entertaining
- Generous enclosed rear yard with garden shed
- Double lock-up garage with drive-through access

Location highlights:

- Conveniently positioned close to the Windmill Hill estate complex, local schools, supermarket, and essential amenities.

Don't miss this wonderful family home in a sought-after location!

Open for Inspection

By Appointment.

Listed By

Gavin Knee

Phone: (02) 67661411

Mobile: 0427 669 151

