

25 Hillside Tce, St Lucia, QLD 4067

Sold - 28/04/2026

House 4 3 2



## Luxurious Family Living in Exclusive St Lucia Locale

If you're chasing a home that blends modern luxury with a peaceful, natural setting, this is one worth your attention. Designed for those who value privacy without sacrificing convenience, it offers a resort-style feel just moments from the CBD.

**Open for Inspection**

By Appointment.

Positioned in an elevated, north-facing setting, the home captures sweeping views across the golf course and Brisbane River. Filled with natural light and cooled by prevailing breezes, it delivers a sense of space and tranquillity throughout.

Thoughtfully designed for relaxed family living, the residence features four generous bedrooms plus a study, including a luxurious master retreat complete with a beautifully appointed ensuite and an oversized walk-in robe. Multiple living areas across both levels, along with two additional bathrooms, provide flexibility and comfort for growing families.

Set within one of St Lucia's most tightly held pockets, this home is just a short walk to highly regarded schools and The University of Queensland, and only 7km from the CBD. Spend your weekends enjoying riverside walks, or head to St Lucia Golf Course for great food and wine, all just moments from your doorstep.

Entertaining is effortless, with stunning timber-framed bi-fold doors opening to a generous outdoor area, framed by private rock walls and landscaped gardens.

Set on an impressive 837m2 parcel, this is a rare opportunity to secure a premium home in an exceptional location. Property Features:

- Elevated north-facing position with golf course and Brisbane River views
- 837m2 block in a prestigious St Lucia location
- Four spacious bedrooms, including luxury master with ensuite and oversized walk-in robe
- Multiple living areas across two levels and two additional bathrooms
- Seamless indoor-outdoor flow with timber bi-fold doors
- Expansive outdoor entertaining area with private rock walls and gardens
- Ducted air conditioning throughout and vacuum-aid system
- Caesar stone bench top and a gas chef's oven with walk-in pantry
- Home security system

### Listed By

Eddie Singh

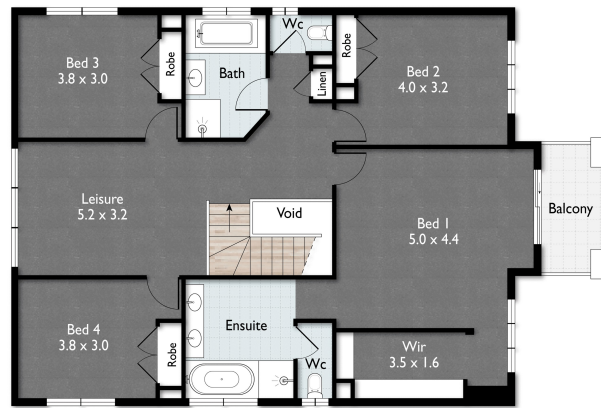
Eddie Singh

Mobile: 0450 534 643

Mobile: 0450 534 643



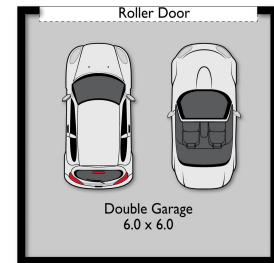
Floorplan



First Floor



Ground Floor



(Not In Position)

5 3 2 345sqm



Scale in meters. Indicative only. Dimensions are approximate.  
 All information contained herein is gathered from sources we believe to be reliable.  
 However, we cannot guarantee its accuracy and interested persons should rely on their own enquiries.