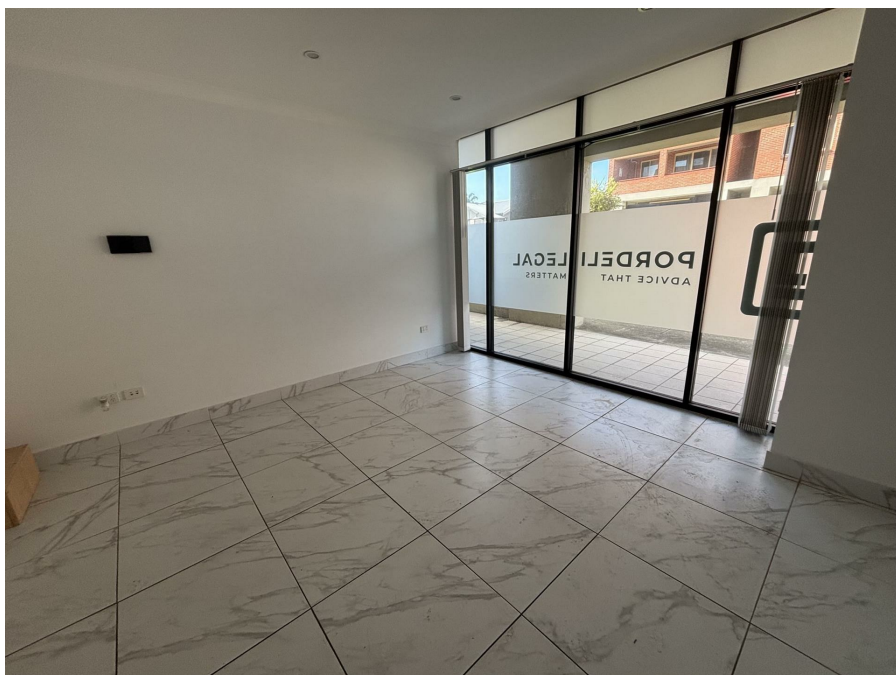


25/39 Earl St, Merrylands, NSW 2160

\$26,000 per year

Retail Shop



Large shop/office with street frontage

This property welcomes clients with a large reception area. it has 2 fully enclosed offices and a toilet. This property provides great exposure to Woodville rd.

It comprises:
a reception area
2 separate offices
bathroom
Ducted air-condition

Total area is approximately 65sqm.

Contact Joelle on 0405500540 from Morning Property to organize an inspection.

Open for Inspection

By Appointment.

Listed By

Joelle Achi

Mobile: 0405 500 540

