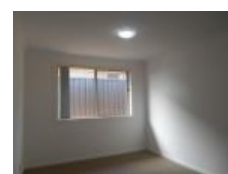


23 Moorebank Rd, Cliftleigh, NSW 2321

Leased - \$380

House 4  2  2 



PRESTIGE LIVING - POPULAR LOCATION

Executive Style, brand new 4 bedroom brick and tile home located in the new section of Heddon Glenn Estate, Cliftleigh.

This elite property is conveniently located with easy access to Maitland & Kurri Kurri as well as the new Hunter Express Way.

This home offers a perfect lifestyle for families, retirees and singles. Not only does this home offer 4 bedrooms with built in robes, a master with walk in robe and ensuite, but also includes, a separate formal lounge room, an open plan living area with a versatile kitchen that features stainless-steel appliances, gas cooking including a dishwasher, double lock up garage with internal access with remote control entry. Also included is study nook for teenagers and full tiled living spaces with split system air conditioning comfort. This home also offers fibre optic telecommunications (NBN).

Externally the home offers a fully fenced yard, low maintenance gardens and lawns and a spacious, covered alfresco area perfect for entertaining. Pets are on application

"The property has Liveability Property Features TM which offer the potential for reduced running costs and increased comfort. For more information on this property please call Mellissa Gibson on 49905333. Mellissa is a trained Liveability Real Estate Specialist. "

Open for Inspection

By Appointment.

Listed By

Mellissa Gibson

Phone: (02) 4990 5333

Mobile: 0466 438 715

