




225/2 Anzac Pk, Campbell, ACT 2612**Leased - \$590**Apartment 1  1  1 **Furnished Executive Apartment in the Sought-After C5 Precinct**

- ? Open plan kitchen, living and dining
- ? Kitchen features electric cooking, ample storage, decent fridge space
- ? Main bedroom with built in robe
- ? Reverse cycle Heating & Cooling;
- ? Furnished apartment as per images
- ? Spacious balcony with option to fully enclose glass
- ? Underground single car park with a storage cage

Open for Inspection

By Appointment.

Located in the heart of the prestigious C5 District, this beautifully appointed 1-bedroom apartment offers the perfect blend of luxury, lifestyle, and convenience. Just minutes from Canberra City, Lake Burley Griffin, Russell Offices, and Mount Ainslie, this home is ideal for professionals and those seeking a premium inner-city lifestyle. Located just a short 9 minute drive to Canberra City Centre.

This property does comply with minimum ceiling insulation standards

EER: Unless an EER is stated, there is no current EER available.

PETS: please be aware that at all stages of tenancy this property requires consent to be sought in writing for the keeping of any pets at the premises. Consent must be provided in writing before any pets are at the premises.

TO ARRANGE AN INSPECTION PLEASE:

1. Click on book inspection button
2. Complete your details
3. Answer pre-qualifying questions
4. Register for a time

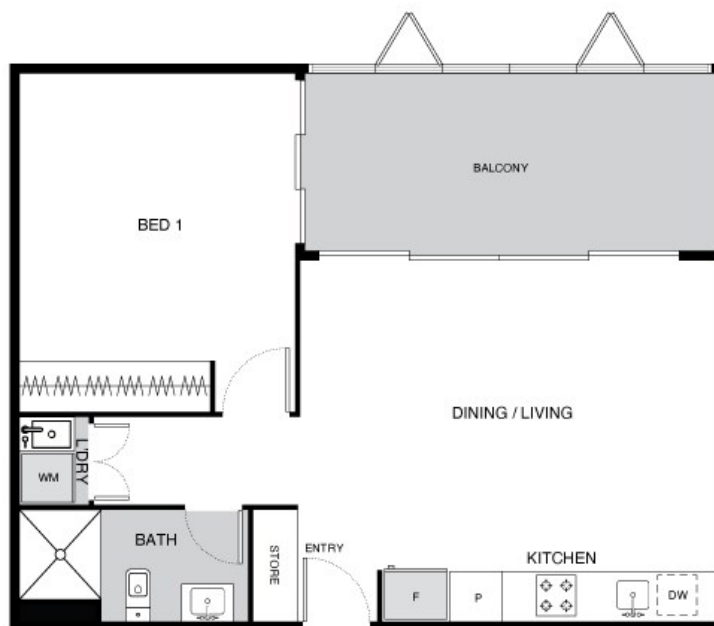
NOTE: IF you do not register you will not be notified of cancellations or changes to the inspection. If no-one has registered for the inspection, the inspection will not go ahead. Alternatively call the office on 6213 3999 to book an appointment.

Listed By

Lyn Fairweather



Floorplan



THIS FLOORPLAN IS INDICATIVE ONLY. DIMENSIONS ARE APPROXIMATE. ALL INFORMATION CONTAINED IS GATHERED FROM SOURCES WE BELIEVE TO BE RELIABLE. WE CANNOT GUARANTEE ITS ACCURACY AND INTERESTED PARTIES SHOULD RELY ON THEIR OWN ENQUIRIES.