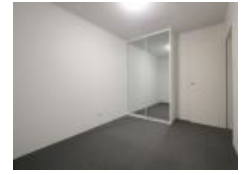


22/12-16 Goulburn St, Liverpool, NSW 2170

\$430

Apartment 2  1  1 



Updated 2 Bedroom Unit in Central Location

Excellent 2 bedroom 1st floor unit, new kitchen and bathroom, L- shaped lounge and dining areas, built in robe to main bedroom, internal laundry, balcony, security building, lock up garage, close proximity to all local amenities including local schools, Liverpool Hospital and Westfield Liverpool.

Open for Inspection

By Appointment.

Listed By
Property Management

