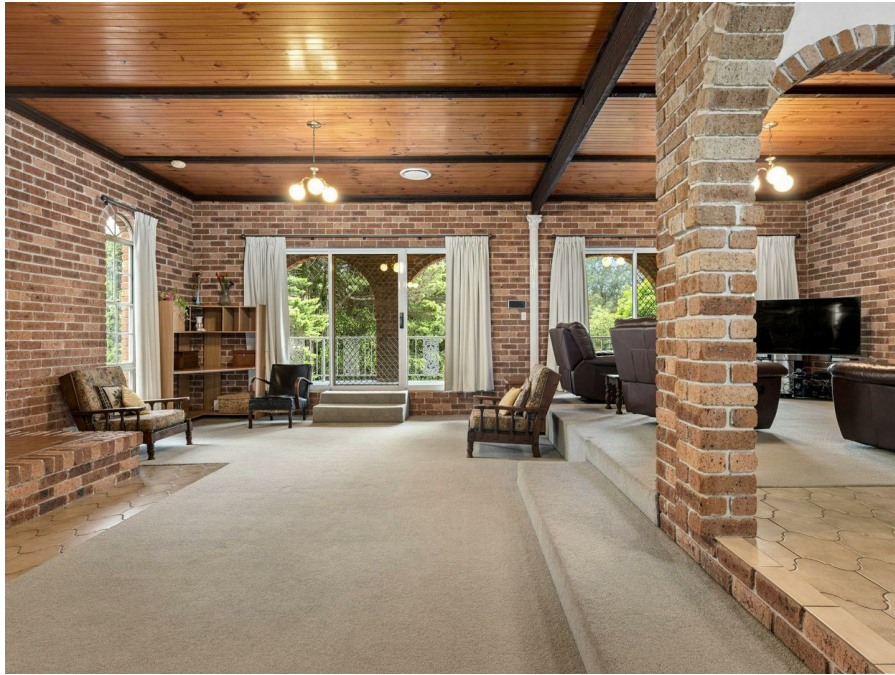


216 Gardeners Rd, Rosebery, NSW 2018

\$2,100

House 6 4



Spacious double brick home positioned in a highly convenient

Century 21 Armstrong-Smith - Bondi Junction are proud to present this spacious double brick home. Nestled in a highly convenient and sought-after neighbourhood, this 6-bedroom family home is ideal for those seeking comfort, flexibility, and lifestyle. The residence combines charming original features with practical living spaces, perfectly suited for large or extended families, multi-generational living, or shared accommodation. The flexible dual-level layout includes separate upstairs and downstairs areas — each equipped with its own kitchen, bathroom, and laundry — providing excellent privacy and independence for multiple households. Located just minutes from Rosebery's buzzing foodie precinct and offering direct transport links to UNSW, the CBD, and beyond, this home is ideal for university staff, students, or families. Public transport, parks, cafes, and shopping are all within easy reach.

Open for Inspection

By Appointment.

Features Include:

- Six generous bedrooms
- Oversized kitchen with abundant storage
- Four bathrooms
- Internal laundry with ample storage
- Private, low-maintenance gardens
- Large balconies on both levels
- Elevated position with a Northern aspect
- Off-street parking for multiple vehicles + oversized lock-up garage with extra storage
- Flexible floorplan
- Close to The Cannery, local cafes, parks, and shops. Easy access to buses and Mascot & Green Square train stations. Direct routes to UNSW and proximity by car or bike

Available 14th of April, 2026

Do not miss this wonderful opportunity!

Disclaimer:

Listed By

The Office
Phone: (02) 9387 4911

The Office
Phone: (02) 9387 4911

