

**213/11-23 Gordon St, Marrickville, NSW 2204**

**\$680 / Wk**

Unit 2  2  1 



**SPACIOUS TWO BEDROOM APARTMENT!**

Set within a tightly held boutique development, this spacious two bedroom apartment offers an uncompromising fusion of design excellence and practical application. Charming original features showcase and embrace the building's early industrial heritage giving the home a stylish and timeless appeal.

**Open for Inspection**

By Appointment.

- \* Spacious combined lounge/dining
- \* Ultra modern gas kitchen with stone benches and stainless appliances
- \* Soaring ceilings with exposed concrete beams, polished hardwood floors
- \* Huge sash windows providing abundant natural light
- \* Master bedroom with adjoining courtyard and ensuite
- \* Separate internal laundry with storage
- \* Modern tiled bathroom
- \* Pool and gym facilities
- \* Security parking

Enviably situated in a quiet street moments to Enmore Rd and King Street, a stroll away from local shops and express city transport.

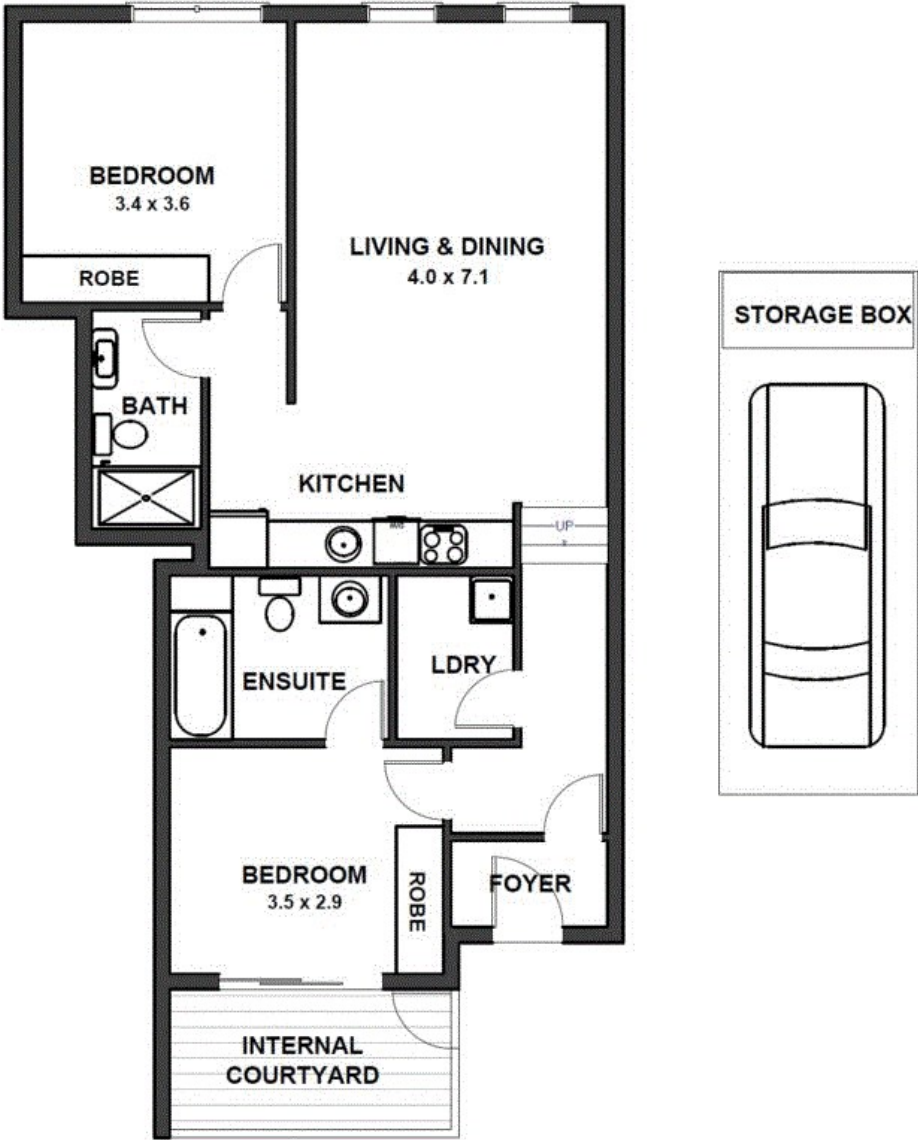
**DISCLAIMER**

The fixtures and fittings shown in our advertisement may belong to the current occupants; therefore these items may not be included in future tenancies. Should you have any questions regarding the fixtures and fittings for this property please send us an email at [ksakavaras@ljhookernewtown.com.au](mailto:ksakavaras@ljhookernewtown.com.au)

**Listed By**  
Jenna Kallin  
Phone: (02) 8595 1888



Floorplan



**Apartment 213, 11-23 Gordon Street, Marrickville**

**DISCLAIMER CLAUSE** The information contained in this brochure has been furnished to us by the vendors. The plan is provided as a guide only. While we trust it to be correct, we cannot guarantee its accuracy. Sizes and areas indicated are approximate only. We have not verified whether or not that information is accurate and do not have any belief one way or another in its accuracy. We do not accept any responsibility to any person for its accuracy and do no more than pass it on. All interested parties should make and rely on their own enquiries in order to determine whether or not this information is in fact accurate.