


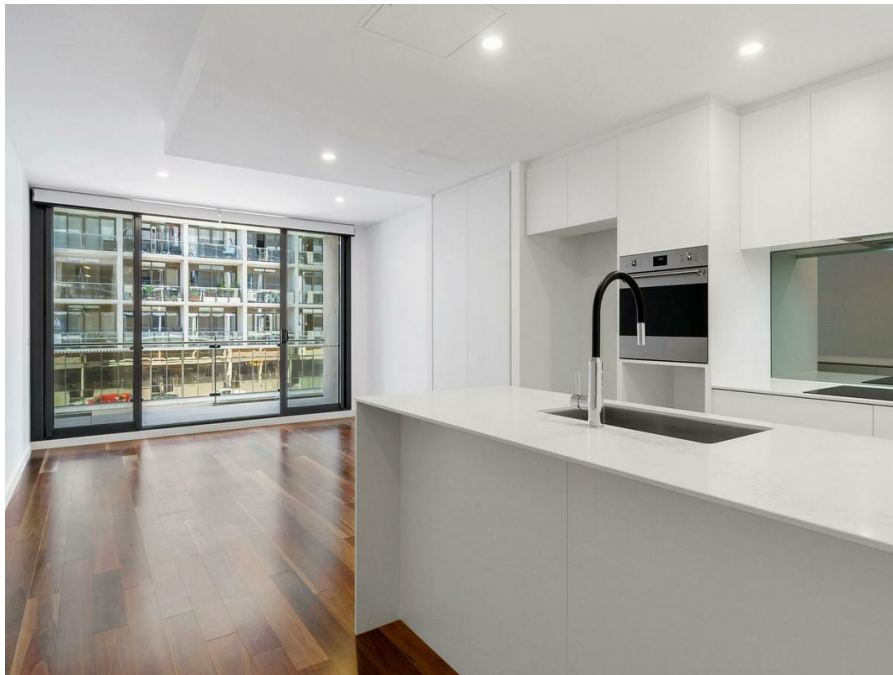


209/4 Anzac Pk, Campbell, ACT 2612

\$560 Per Week

Apartment 1  1  1 



Welcome to The Parade!

Make sure you do not miss out on your chance to live near an iconic landmark in Canberra.

From the moment you enter the front door, you are greeted with wooden flooring and light coloured schemes making this feel spacious and homely.

Open for Inspection

By Appointment.

Internally, the contemporary finishes provide The Parade with a timeless yet modern feel. Light filled spaces, expansive windows and spacious balcony make it easy to enjoy indoor-outdoor living. While the generous bedroom, well-thought out storage and gourmet kitchen with Miele appliances, soft close drawers and marble benchtops will make you feel right at home the moment you walk in.

Features include:

- Built-in robe
- Balcony
- Dishwasher
- Ducted heating and cooling
- Wooden flooring
- NBN ready

No current EER

This property has a valid exemption and is not required to comply with the minimum ceiling insulation standard.

This property is awaiting an insulation information from the Owners Corporation.

Suburb Snapshot

Campbell is a suburb of Canberra, Australian Capital Territory, Australia. Covering an area to the South East of the central business district, Campbell sits at the base of Mount Ainslie and is bounded to the south east by the Mount Pleasant Nature Reserve. At the 2016 census, Campbell had a population of 4,997 people.

The suburb of Campbell is named after Robert Campbell, the owner of Duntroon station on which Campbell is now located. Many buildings built by Robert Campbell and his family are still standing around Canberra, including Blundell's Cottage, St John the Baptist Church, Reid, Duntroon House (now part of BMC).

Listed By

Kaylene King
Phone: (02) 6249 7700
Mobile: 0409 574 178

