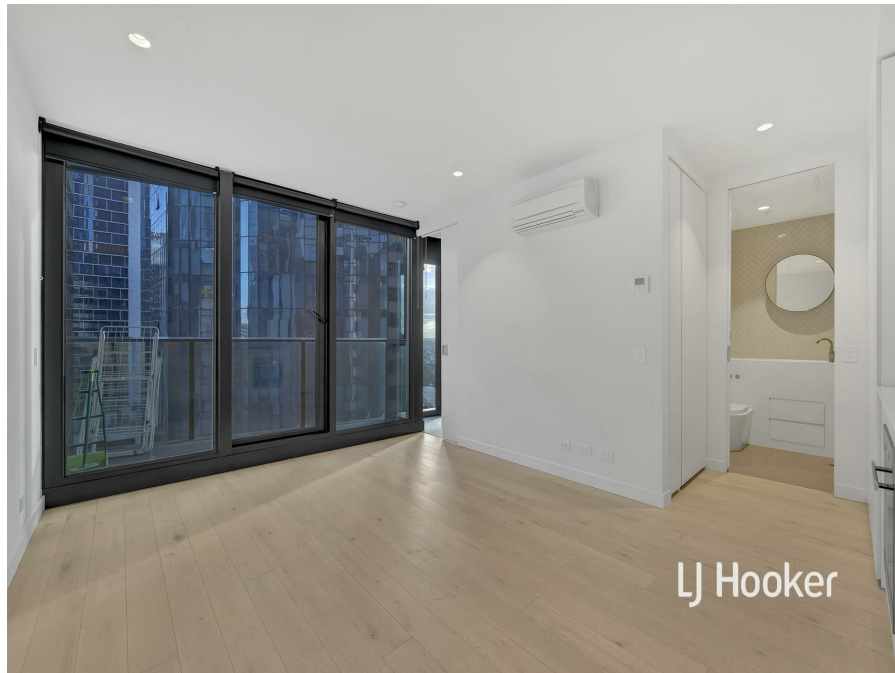


2005/127-141 A'beckett St, Melbourne, VIC 3000

Leased - \$600

Apartment 1  



Lovely 1-bedroom apartment in the heart of Melbourne CBD (EQ

*Fully Furnished Option is Available at Extra Cost

EQ Tower is a landmark building with benchmark design. Set between 2 of Melbourne's iconic streets, Queen and Elizabeth Street, this beautiful EQ Tower rises from the city's rich cultural fabric and brings a new level of sophisticated elegance to the CBD.

It has an open-plan living area that extends with an outdoor balcony with spectacular views. This apartment also has a well-positioned kitchen that is equipped with stainless steel appliances and plenty of cupboard space.

Its spacious bedroom offers BIR's and City views. Other features include secure intercom access, floor to ceiling windows, stylish bathroom, split system air-con and generously-sized balcony.

EQ Tower also offers its residents a 25-metre outdoor swimming pool and BBQ area, indoor gym, sauna, spa, private dining rooms, karaoke suites, cinema, games room and lounges.

*****Arranging an inspection is easy!*****

To book a time to inspect, simply click on the Book an Inspection Time button OR click Contact Agent, email through your details so we can reply with available appointment times for you to register to inspect. By registering, you will be INSTANTLY informed of any updates, changes or cancellations for your appointment.

Open for Inspection

By Appointment.

Listed By

Rebecca Halton

Mobile: 0448 843 311

