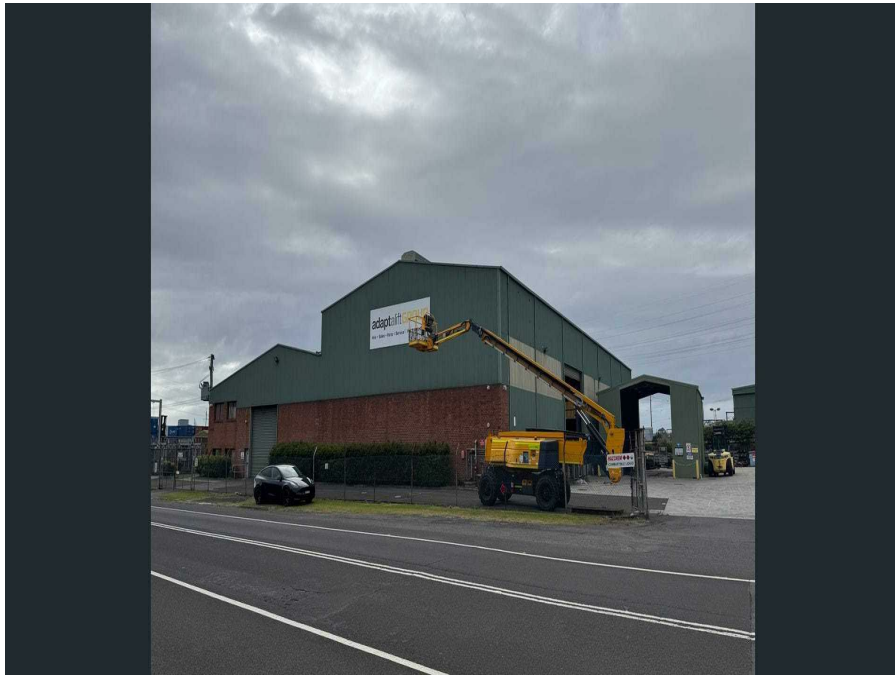


20-24 Flinders St, Port Kembla, NSW 2505

Contact Agent

Warehouse



Expansive Industrial Complex

- * Over 2700 sqm warehouse space with high internal clearance heights
- * Multiple high clearance roller doors
- * 1 x 20t gantry crane and 1 x10t gantry crane
- * Approx. 600 sqm office and amenities
- * 300kVa of Power to site
- * Large sealed and secure hardstand
- * Additional awning/wash bay

Open for Inspection

By Appointment.

Listed By

Tony Moschella

Mark Marinelli
Phone: (02) 4229 6640
Mobile: 0490 044 102

