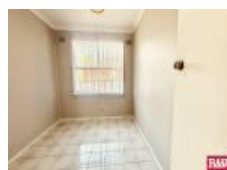


20 Horton St, Mount Pritchard, NSW 2170**Leased - \$700**House 5  2 

Renovated & Ready to call Home .

Freshly Painted throughout with 5 bedroom this property is sure to impress.

Features

Fully tiled throughout with Ducted A/C for added comfort in living room & 3 Bedrooms .

Spacious Light filled Living Room.

Kitchen With Ample Storage space & Dishwasher , Gas appliances.

Built in Wardrobe to Main bedroom

Second living Area with second Kitchenette & Bathroom & Large Store Room

Unobstructed Park Views

Located walking distance to local shops

Walking Distance to Public transportation.

Looking for Long term Tenants!

Open for Inspection

By Appointment.

Listed By

Natalie Ma

Phone: (02) 9755 5575

Mobile: 0408 016 551

