

2 Wirraway Boulevard Bvd, Badagarang, NSW 2540

Price Guide \$850,000

Duplex 3 2 1



## Brand New Luxury Living in Peaceful Badagarang

PROPERTY DISCLAIMER: All internal photos are taken from 9 Catalina Place, Badagarang. Please refer to the floorplan for layout and sizes.

**Open for Inspection**

By Appointment.

Welcome to 2 Wirraway Place, a stunning brand-new residence crafted by renowned local builders MS Building. Set in the peaceful and family-friendly enclave of Badagarang, this contemporary three-bedroom, two-bathroom home delivers premium quality, comfort, and style-offering you the chance to be the very first to call it home.

Inside, an open-plan living and dining space flows effortlessly into a sleek, designer kitchen featuring premium appliances, ample storage, and stone benchtops that make both cooking and entertaining a pleasure. Large glass doors open to a private alfresco area-perfect for enjoying your morning coffee, weekend barbecues, or relaxed evenings outdoors.

Upstairs, the home continues to impress with three generous bedrooms, each filled with natural light and complete with built-in wardrobes. The master suite serves as a private retreat with its own walk-in robe, ensuite, and balcony, creating the ideal space to unwind. A second bathroom with luxury fittings and a family-friendly layout completes the upper level.

Positioned on a low-maintenance 261sqm (approx.) block, the property offers the perfect blend of space and simplicity-ideal for families, downsizers, or investors seeking effortless living. Enjoy the tranquillity of this emerging community while being only a short drive to Nowra's shopping precincts, parks, schools, and transport links, ensuring convenience without compromise.

With its high-end finishes, thoughtful layout, and unbeatable location, 2 Wirraway Place represents an exceptional opportunity to secure a modern home in one of the Shoalhaven's most exciting new suburbs.

Contact us today to arrange your inspection and experience the quality for yourself.

DISCLAIMER: Ray White Kiama has taken all care in preparing this information and uses its best endeavours to ensure that the information contained therein is true and accurate, however, accepts no responsibility in respect of any errors, inaccuracies or misstatements contained herein. Ray White Kiama urges all clients to make their own enquiries to verify the information contained herein.

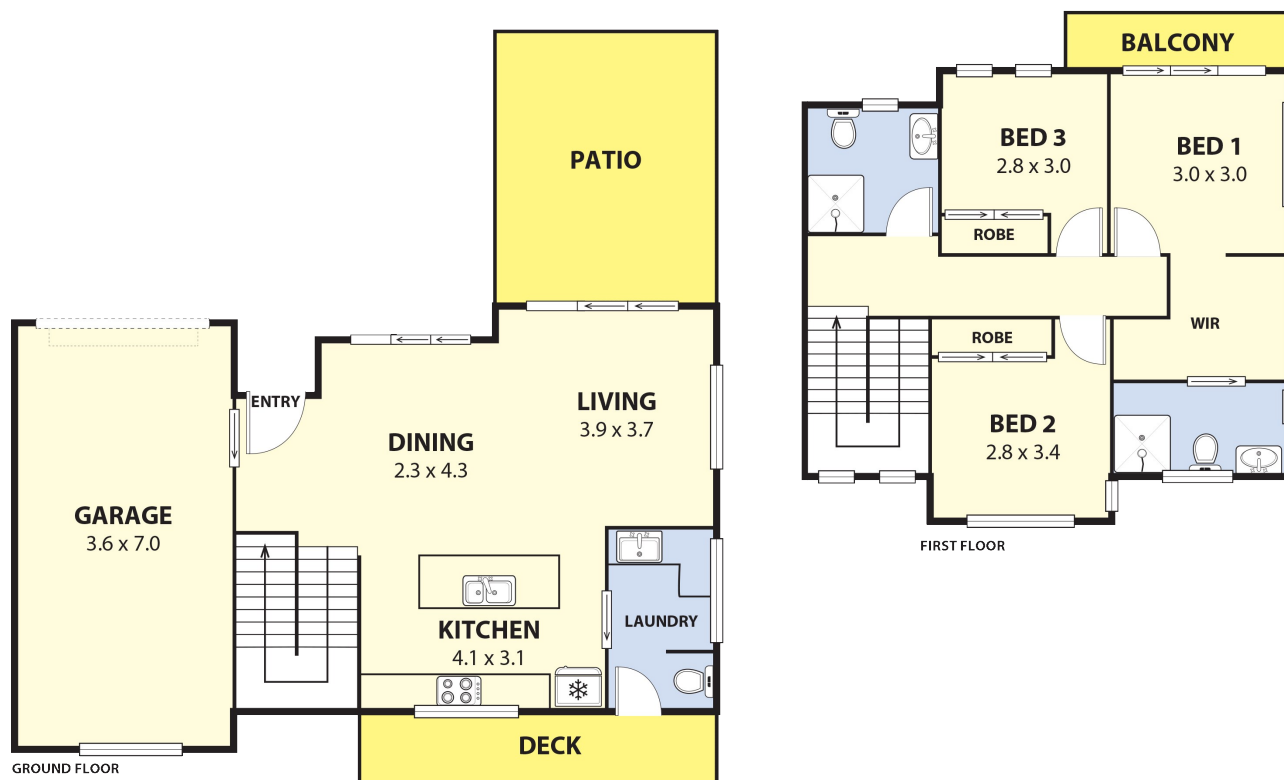
### Listed By

Matthew Lay

Michele Lay  
Phone: (02) 4232 3300  
Mobile: 0409 461 756



## Floorplan



### 2 WIRRAWAY BLVD, BADAGARANG

Plans shown are for presentation purposes and are not part of any legal document or title and are subject to errors, omissions, inaccuracies and should not be used as sole and accurate reference. Particulars given are for general information only and do not constitute any representation on the part of the vendor or agent. No liability will be accepted.



**Louka**  
wearelouka.com

Internal	110m <sup>2</sup>
Garage	25m <sup>2</sup>
Patio/Deck	25m <sup>2</sup>
<b>TOTAL SPACE</b>	<b>160m<sup>2</sup></b>

