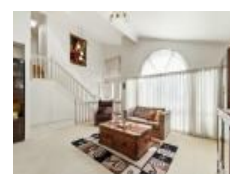


2 Maritime Ct, Victoria Point, QLD 4165

Sold - 6/05/2025

House 4 3 4



SOLD - "Exclusive Pt O'Halloran"

Family Home 700sqm Lot 700sqm Side Access
Quiet Cul De Sac Position
Stunning Waterfront & Parkland Area
North Facing on High Side of Road
Huge Separate Lounge Room
Separate TV / Living Rooms
Family and Dining Areas off Kitchen
Spacious Kitchen with Brekky Bar & Dishwasher
Master Bedroom with Ensuite
4m x 4m Parents Retreat off Main Bedroom
3 Full Bathrooms 2 Up & 1 Down
Spacious Under Roof Tiled Patio Area
Walk in Linen plus Storage under Stairs
Level Backyard Area with Room for a Pool
Elevated 700sqm Allotment - 21m Frontage
2 Remote Control Lock up Garages
Side Driveway Access to 6 x 6m Shed with Power

*Ducted Airconditioning Upstairs - Split System Down
*9.9kw Solar Power System

Inspections Welcome !!

Victoria Point is an undiscovered seaside 700sqm located on the coast, east of Brisbane City.
Enjoy a superb lifestyle with Boating, Fishing, Sailing, walkways, bike ways, parks and boat ramp on your doorstep. Victoria Point's Major Shopping Centre and the Lakeside Precinct with cafes, restaurants, cinemas, library and medical centre are all nearby for your convenience

40 mins - Brisbane Airport

Listed By

The Office
Phone: (07) 3286 2500

The Office
Phone: (07) 3286 2500



Open for Inspection
By Appointment.