

2/538 President Ave, Sutherland, NSW 2232

Sold - \$640,000

Unit 2  1  1 



Entry Level..... UNDER CONTRACT

Villa style ground level apartment enjoying a sunny north aspect within easy level stroll to town centre.

- Open floorplan offering a warm spacious layout
- Featuring North/South crossflow ventilation enhancing summer cooling
- Spacious & Vibrant living area for your enjoyment
- Separate bath & shower in window vented bathroom
- Both bedrooms offer built in wardrobes
- Large window vented laundry with ample storage
- Lock up garage
- 11 undercover visitor car spaces in basement
- Low maintenance living on offer !

Strata – \$1208 per ¼

Water - \$172 per ¼

Council - \$381 per ¼

Lots in Complex - 24

Age – Strata Plan registered 1992

Occupation status – Owner Occupied

Open for Inspection

By Appointment.

Property Features

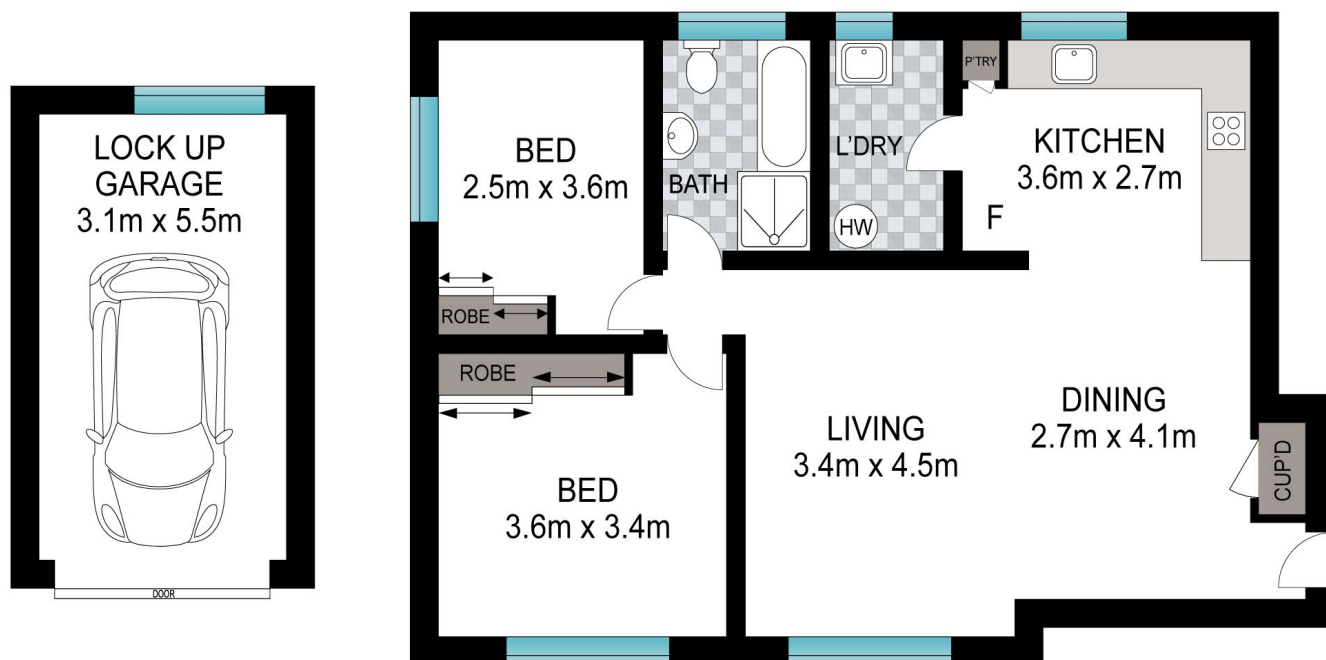
- Villa style apartment

Listed By
Sham Watkins

Mobile: 0409 286 652



Floorplan



Scale in metres. Indicative only. Dimensions are approximate. All information contained herein is gathered from sources we believe to be reliable. However, we cannot guarantee its accuracy and interested persons should rely on their own enquiries.

2/538 President Avenue, Sutherland