

**2/4 Bligh St, Tamworth, NSW 2340**

**By Negotiation**

Office Suite



## BLIGH STREET PROFESSIONAL CENTRE!

Outstanding modern fringe CBD office tenancy with High-end Commonwealth level fitout all with secure 15 basement car parks. Only 3 other long term tenants reside in the building.

- Outstanding opportunity for corporate office headquarters, consultancy businesses or medical
- Attractive and ergonomic building design with high quality office fit out
- Approx. 480m2 of gross lettable area with street level access
- 15 Secure basement car parks with lift access to ground level offices
- All moments from the CBD and 3-4 blocks from Tamara Private Hospital and the Tamworth Base Hospital
- Combination of open plan design, private offices and large boardroom

**Open for Inspection**

By Appointment.

### Listed By

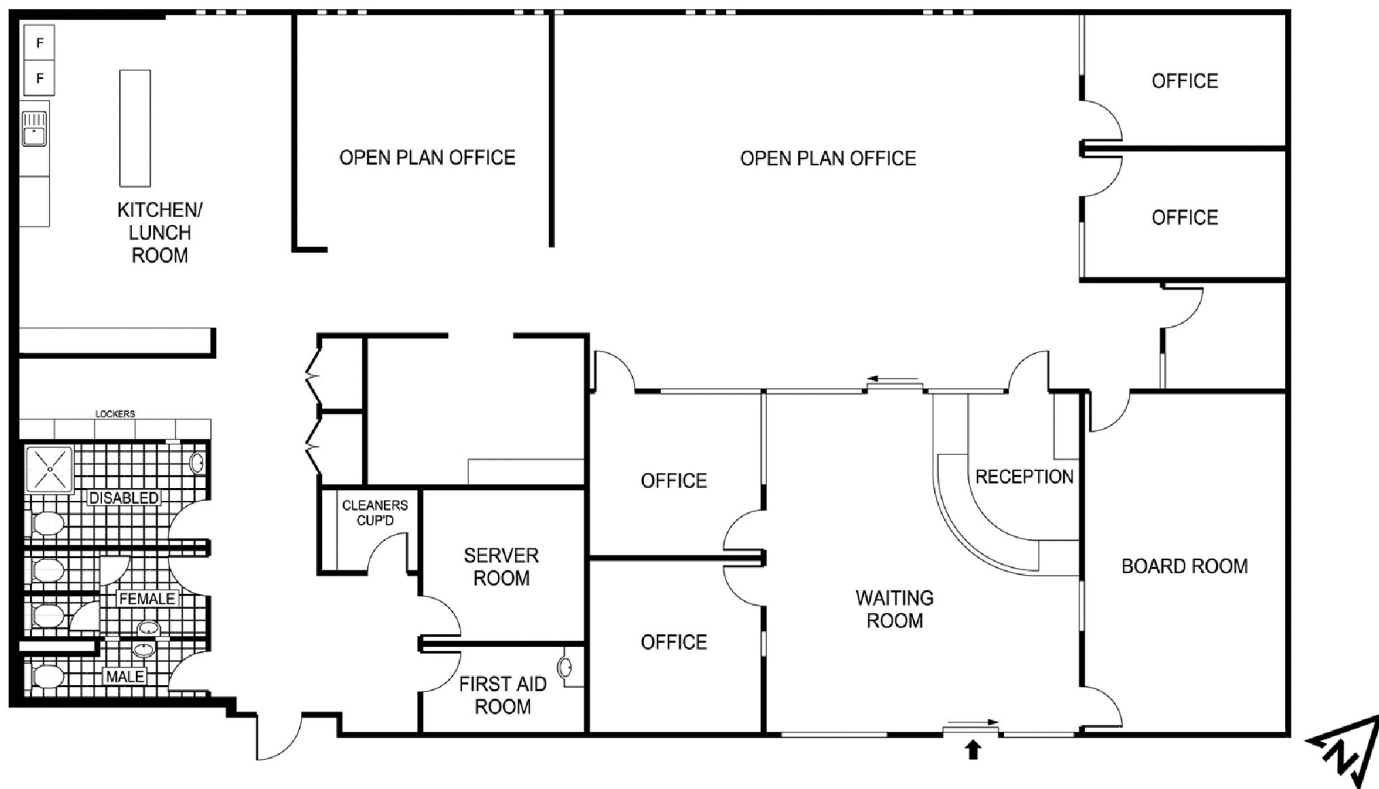
Gavin Knee  
Phone: (02) 67661411  
Mobile: 0427 669 151

Gavin Knee  
Phone: (02) 67661411  
Mobile: 0427 669 151



Floorplan

## 2/4 Bligh St, TAMWORTH



**burke & smyth**  
commercial

Total GLA: 481.34m<sup>2</sup>

Plan(s) shown are indicative only of layout. Dimensions are approximate.  
No warranties or guarantees are given. Interested parties should rely on their own inquiries.  
Floor plan by Protophany.net.au