

2/376 Princes Hwy, Corrimal, NSW 2518

\$2,600 per month (GST exclusive)

Retail Shop



High-Exposure Corner Site

**Only Showroom for Lease at this stage.

Prominent Princes Highway position with constant passing traffic and standout signage opportunity. Ideal for showroom or light workshop use, capturing strong local trade with easy customer access and convenience.

- Corner exposure on one of Corrimal's busiest thoroughfares
- Broad window frontage for display and branding
- Sealed flooring; practical, easy-care presentation
- Plentiful street parking at the door
- Short walk to town centre amenities and public transport
- Flexible lease terms
- Available now, inspections by appointment

Open for Inspection

By Appointment.

Listed By



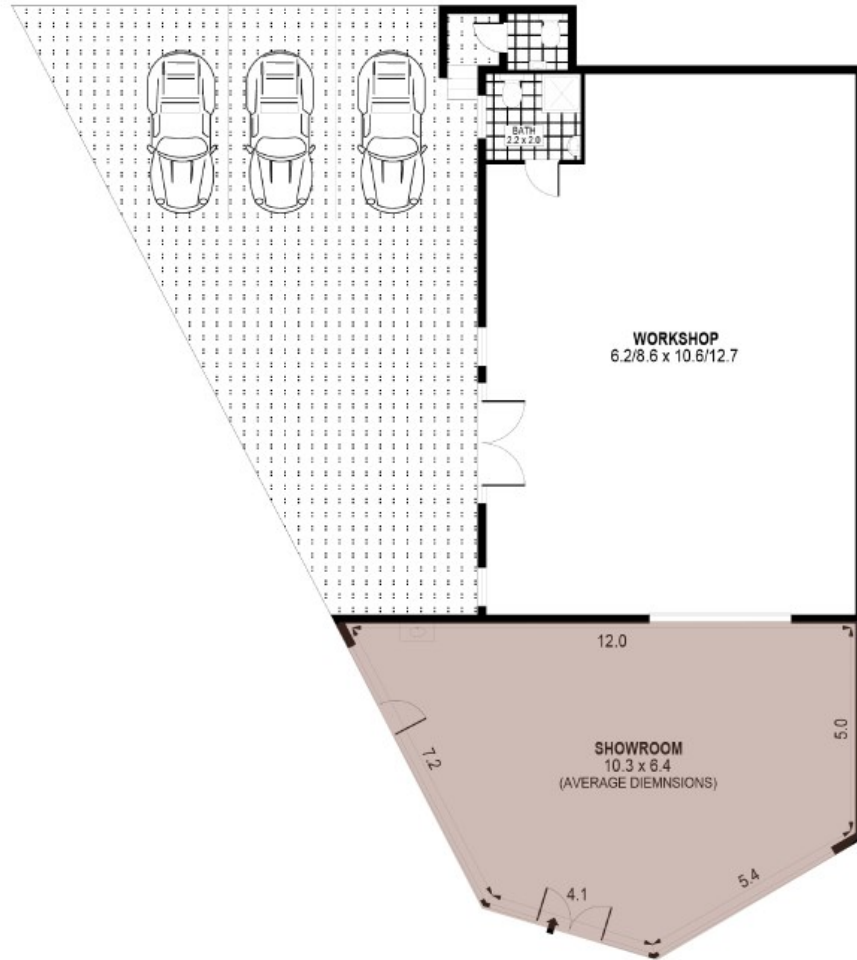
Chris Styliis
Phone: (02) 4229 8600
Mobile: 0419 211 331



Con Papadopoulos
Phone: (02) 4229 8600
Mobile: 0408 604 040



Floorplan



0 1 2 3 4 5
SCALE (METRES)
PLANS SHOWN ONLY INDICATIVE OF LAYOUT. DIMENSIONS ARE APPROXIMATE.
Ref No: 07649



SHOWROOM : 69m²
WORKSHOP : 108m²

376 PRINCES HIGHWAY

CORRIMAL