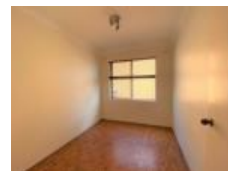


2/36 Ferguson Ave, Wiley Park, NSW 2195

Leased - \$470

Apartment 2  1 



When Location Matters

This elevated ground floor apartment is conveniently located in a sought after security building within walking distance to all amenities.

- * Spacious open plan lounge with timber floorboards throughout
- * Neat & tidy eat-in kitchen
- * Reverse cycle air-conditioning in lounge room
- * Internal laundry
- * Bathroom with separate shower and bath
- * Security building with intercom access
- * Registered car space
- * Well maintained building

Open for Inspection

By Appointment.

Listed By

The Office

Phone: (02) 9789 6088

