

2/18 Jasmin Dr, Bongaree, QLD 4507

\$1,150,000 - Presenting Offers!

Duplex 3  2  2 



Premium Canal-Front Living on Bribie Island

Welcome home to 2/18 Jasmin Drive, Bongaree

Open for Inspection

Sat, 02 May 2026 - 9:00 AM to 9:30 AM

This property is a quality canal-front duplex offering relaxed coastal living in one of Bribie Island's most tightly held waterfront pockets. Positioned on the highly sought-after Bongaree Canals, this solid double-storey brick and tile residence delivers direct boating access to the Pumicestone Passage and beyond. With the Bongaree lock just 700 metres away, you can be out enjoying Moreton Bay in minutes.

Set on its own generous 443m² block in a quiet, well-regarded street, this home forms part of the established Carol Units and is renowned for its solid construction and spacious design.

From the moment you arrive, you are welcomed by a secure, north-facing courtyard, a private and sunlit entry that sets the tone for the lifestyle on offer. Inside, the home boasts expansive, separate living and dining areas that flow seamlessly through to the well-appointed kitchen, past the separate laundry and into the double garage complete with workshop and additional storage.

The heart of the home extends outdoors to a Stratco-covered rear patio and screened entertaining area, perfectly positioned to capture tranquil canal views and cooling breezes. This is the perfect place to enjoy your morning coffee or evening sunset.

From here, follow your private walkway down to your own pontoon, complete with power, water and winch, ideal for boating enthusiasts, jet skis, or simply casting a line and soaking in the peaceful waterfront setting.

Upstairs, three generous bedrooms provide comfortable accommodation, all with built-in robes. The spacious master suite is a true retreat, featuring a walk-in robe, ensuite, and a private balcony overlooking the canal.

Recently re-carpeted and equipped with solar power, this home offers comfort, efficiency and low-maintenance living in equal measure. Located just moments from the Bongaree foreshore, cafes, parks, boat ramps, primary and secondary schools, and shopping precincts, everything you need is within easy reach. This home allows you to enjoy the laid-back Bribie Island lifestyle where the pace of life feels just right.

Whether you are looking to move in and enjoy, downsize by the water, or secure a quality investment in a growing coastal market, this is an outstanding opportunity to secure prime canal front real estate in central Bongaree.

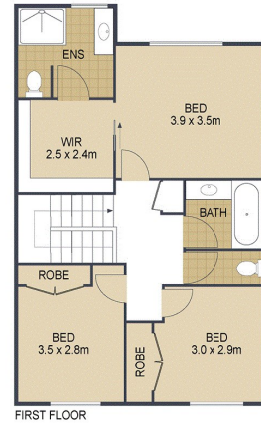
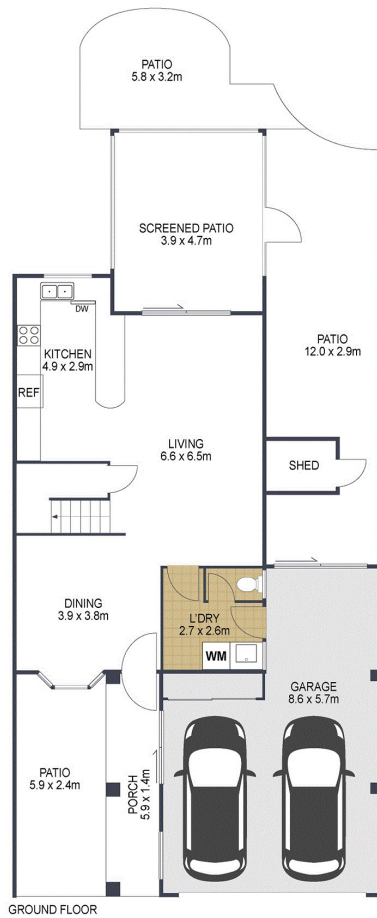
Listed By

Sarah Falzon
Phone: (07) 3400 1900
Mobile: 0437 743 231

Sarah Falzon
Phone: (07) 3400 1900
Mobile: 0437 743 231



Floorplan



	3
	2
	2
TOTAL:	273 m²

2/18 Jasmin Drive, **BONGAREE**

ARTIST'S IMPRESSION ONLY: While every attempt has been made to ensure the accuracy of this floor plan's areas and measurements of doors, windows, rooms and all other items are approximate and no responsibility is taken for any error, omission, or mis-statement. This plan is for illustrative purposes only and should only be used as such by any prospective purchaser. Floor plan by: www.open2view.com.au