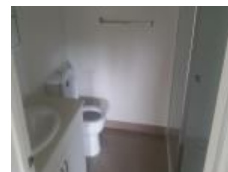
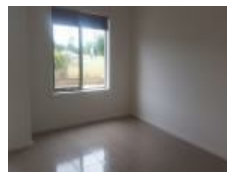


2/1-11 Hyde Park Ave, Craigieburn, VIC 3064

\$325 P/W

Townhouse 2  1  1 



AVAILABLE NOW!

This low maintenance townhouse offers spacious lounge, kitchen/dining area, downstairs powder room & european laundry, single remote control garage, 2 bedrooms upstairs serviced by a central bathroom. Split-system heating & Cooling on both levels.

Open for Inspection

By Appointment.

Listed By

The Office

Phone: (03) 9333 0212

