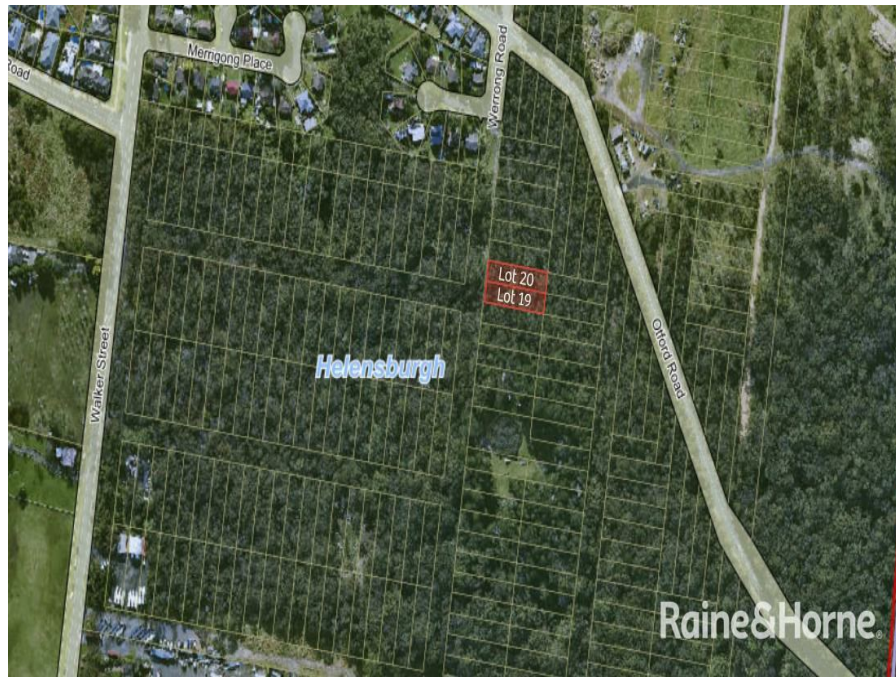


19 Sec 5 Dp 2644 Werrong Rd, Helensburgh, NSW 2508

Sold - \$75,000

Residential Land



Environmental Land - Two Adjoining Lots - \$90,000 Each Lot

Positioned at the top end of Helensburgh, these two parcels of land present a unique opportunity to secure a natural bushland holding. Zoned C3 Environmental Management, the lots measure approximately 923m² each and are largely covered in native trees that cannot be cleared under current regulations. Please note this is not residential land. Construction of any kind including portable homes, caravans, or storage containers is not permitted at this time.

Open for Inspection

By Appointment.

While current zoning restricts development, possible future zoning changes may create alternative opportunities. In the meantime, this represents an affordable investment in Helensburgh's tightly held landscape, land that may appreciate in value over time. Combined council rates \$190 per annum.

Listed By

Julie York
Phone: (02) 42949800
Mobile: 0405128070

