

18 Winnecke Ave, East Side, NT 0870

Sold - 11/07/2025

House 4  2 



## Stylish East Side Living – Recently Renovated Family H

This recently renovated home is ready to welcome new owners looking to enjoy the vibrant East Side lifestyle. Offering four generous bedrooms, the main features a private ensuite, walk-in robe, and direct outdoor access through sliding doors. The remaining bedrooms include built-in robes, while the well-appointed family bathroom is complemented by a separate toilet for added convenience.

The open-plan living and dining areas are filled with natural light, enhanced by large windows and a cozy fireplace, creating a warm and inviting space. The kitchen is both stylish and functional, complete with a gas cooktop, electric oven, dishwasher, and ample pantry storage. Sliding doors extend the living space to a wraparound deck, ideal for entertaining and embracing the relaxed outdoor lifestyle.

The property is rich in lifestyle features, including a sparkling pool, mature citrus trees, and a solar hot water system. The native landscaped front yard adds charm and curb appeal, while a garden shed provides practical storage.

Families will appreciate the private playground and well-maintained lawn area, perfect for children and outdoor activities. An external laundry adds convenience, rounding out the home's functionality.

Ideally located close to the CBD, schools, shops, and restaurants, this is a fantastic opportunity to secure a quality residence in the highly sought-after East Side suburb.

Council Rates: \$2,659.60

**Open for Inspection**

By Appointment.

### Listed By

Doug Fraser  
Phone: (08) 8950 6333  
Mobile: 0418 897 768

Sam Linn  
Phone: (08) 8950 6333  
Mobile: 0423 337 469



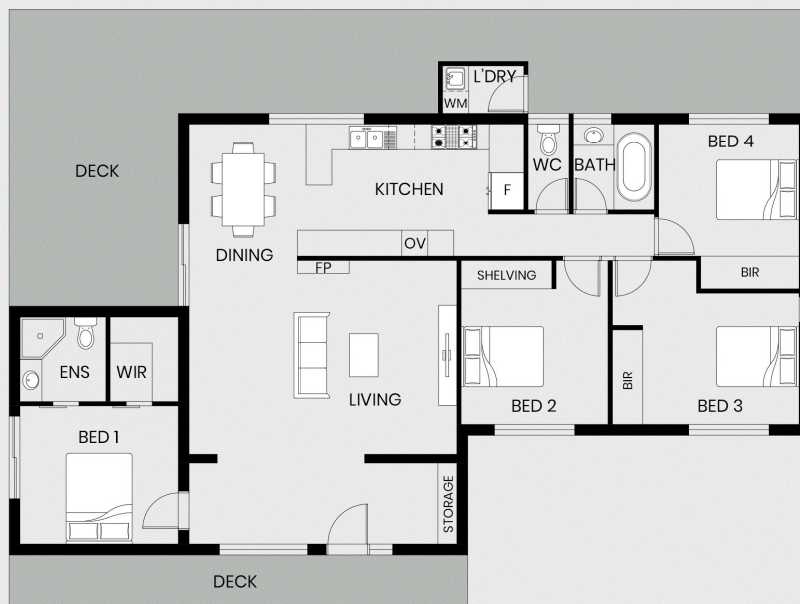


## Floorplan

### 18 Winnecke Avenue, EAST SIDE NT 0870



**SITE PLAN**



**FLOOR PLAN**



This floor plan including furniture, fixture measurements and dimensions are approximate and for illustrative purposes only. BoxBrownie.com gives no guarantee, warranty or representation as to the accuracy and layout. All enquiries must be directed to the agent, vendor or party representing this floor plan.