

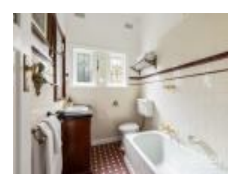


18 Cambridge St, Hawthorn East, VIC 3123

Sold - 16/11/2024

House  



Enchanting English Revival in Tranquil Gardens

Utterly enchanting from the meandering brick paved path embraced by glorious garden surrounds to the charming English Revival façade with welcoming entrance vestibule; this tranquil sanctuary situated in a tree-lined street of period homes is a tightly held, captivating place you will not want to leave.

Imbued with period attributes incorporating soaring ceilings adorned with ornate detailing, cornices and ceiling roses, picture rails, lead-lighting, fretwork and hardwood timber flooring alongside modern comforts such as ducted heating and ducted refrigerated air-conditioning throughout, the home is presented in impeccable condition.

The classic long hall introduces a generous main bedroom overlooking the verdant front garden, fitted with built in robes, plantation shutters and a ceiling fan, a large second bedroom also with plantation shutters and built in robes plus a colonial style bathroom with shower over bath.

The elegant fireside lounge room evokes a bygone era of grandeur with its palatial proportions and flows to the spacious dining room adjoined by the timeless granite topped kitchen with ILVE five burner gas cooktop and oven plus a Bosch dishwasher.

Double glass doors extend the entertaining area to a sensational elevated alfresco deck with an in-built bar bench and Kooka Stove which has been converted to a BBQ attached to the main gas line, all under a pergola affording a magnificent outlook to the supremely private and peaceful rear garden with paved patio shrouded in established trees and greenery, providing dappled sun light all year-round.

The European laundry, attic storage, off street parking and shed/workshop are excellent inclusions and a position strolling distance from Camberwell and Auburn train stations, Burke Road trams, Camberwell Junction and Auburn Village, Rathmines Reserve, Auburn Primary School and esteemed private schools is impossible to beat.

Shelter Real Estate Agents Hawthorn East

Open for Inspection

By Appointment.

Listed By

Daniel Reynolds

Phone: (03) 9889 3990

Daniel Reynolds

Phone: (03) 9889 3990

