

171 Clarke Street East East, Carey Park, WA 6230

Sold - 16/12/2024

House 3 1/2 1 1/2



## Family Living on Generous Block!

Nestled on a generous 920m2 block, this inviting family home is designed to blend spacious living with warm, welcoming charm. Located in the heart of Carey Park, this property offers a perfect mix of functionality, convenience, and style, making it an ideal setting for family life. With its close proximity to schools, shopping centres, and Bunbury's city centre, this home seamlessly combines convenience and comfort.

**Open for Inspection**

By Appointment.

Step inside to discover thoughtfully designed spaces, high ceilings, and a cosy yet expansive living room featuring a wood combustion heater and split-system air conditioning for year round comfort. The heart of the home is the kitchen, which exudes a charming country vibe with wooden benchtops, and is equipped with a 900mm stainless steel freestanding oven and a 5 burner cooktop, perfect for cooking enthusiasts.

### Property Highlights Include:

- 1/2 3 spacious bedrooms, 1 bathroom, with floor to ceiling built-in robes in the second bedroom
- 1/2 Side access with ample room for boats, jet skis, or other recreational gear
- 1/2 Powered drive-in shed for hobbies, storage, or workspace
- 1/2 20 solar panels to help lower everyday energy costs
- 1/2 Below ground pool for endless summer enjoyment
- 1/2 Entertainer" patio ideal for outdoor dining and social gatherings
- 1/2 Near new instantaneous hot water system for added efficiency

With ample space for relaxation, entertaining, and making family memories, this home is a true retreat.

Contact Ned on 0488 556 452 for further information or to arrange a viewing. Your new beginning starts here!

This property is run through the Propps system, please register to view.  
<https://prop.ps//duVpmUGS9TJP>

Grand Home Open - Saturday 2/11/2024 9am - 10am

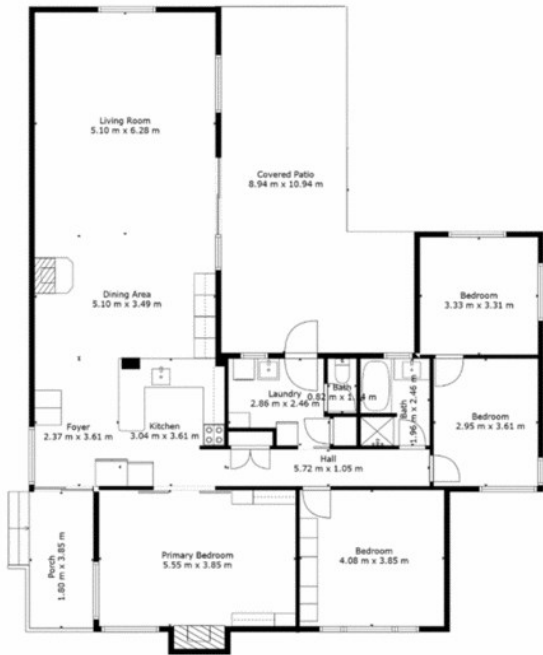
### Listed By

The Office

Phone: (08) 9791 6880



Floorplan



171 CLARKE STREET EAST, BUNBURY WA 6230  
OFFERED BY RACHEL NED MACLEOD-PETERSON  
0488 556 452  
rachel.ned@ljhsouthwest.com.au



FLOOR	FINISHED	
	M <sup>2</sup>	
FLOOR 1	212M <sup>2</sup>	
TOTAL	212M <sup>2</sup>	

\*\*\*PREPARED FOR THE EXCLUSIVE USE OF RACHEL MACLEOD-PATERSON, LJ HOOKER SOUTH WEST. MEASUREMENTS MAY NOT BE 100% ACCURATE, IF CRITICAL BUYER TO VERIFY\*\*\*

