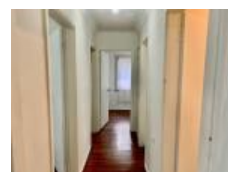


17 Homepride Ave, Warwick Farm, NSW 2170

Leased - \$600

House 3  1  1 

BRICK VENEER HOUSE

This neat and tidy 3 bedrooms brick veneer house located at quiet street short walking distance to primary school and Liverpool Westfield, It has the following features. Huge comfort lounge room, Updated kitchen with Electric cook top stove, Polished timber floor, Neat & Tidy bathroom, Internal laundry, lock up garage Available Now

Open for Inspection

By Appointment.

Listed By

Eric Lu
Phone: (02) 9727 6222

Eric Lu
Phone: (02) 9727 6222

