

16/68 Wentworth St, Randwick, NSW 2031

**Auction**

Unit 2  1  2 



## Designer Parkside Living In The Award-Winning "Pindari"

Located in an impeccably maintained security building, this state of the art, 2 bedroom apartment is in excellent condition and presentation throughout. Streamlined interiors and a spacious layout capture the essence of low-maintenance designer living in this stylish park side apartment. Designed by acclaimed architects Candalepas Associates, the multi award-winning "Pindari" has been crafted to integrate with the natural beauty of its surrounds and is set amid beautiful park-like grounds in an exclusive pocket of Randwick North between Centennial Park and Randwick village.

Offering the latest in contemporary living it has a fluid indoor/outdoor layout, 2 generous bedrooms with built in robes, a spacious combined living/dining area, a Caesarstone gourmet kitchen with all modern appliances, a fully equipped bathroom with two showers and a tub, an internal laundry complete with dryer, a balcony, reverse cycle air conditioning for year round comfort, the convenience of level lift access, a security intercom system and a tandem lock-up garage completes this home.

In a very quiet, peaceful setting and location, only a short stroll to Centennial Parklands, both Frenchmans Road Shopping Village and The Royal Randwick Shopping Village, shops, café's, restaurants and transport. Likewise, it is within close proximity to UNSW, POWH, beaches, highly regarded schools, and all other local infrastructure. This apartment is indeed a rare find, perfect as either your new abode or as part of your investment portfolio.

### Open for Inspection

Sat, 23 May 2026 - 11:00 AM to 11:30 PM  
Wed, 27 May 2026 - 11:00 AM to 11:30 PM  
Sat, 30 May 2026 - 11:00 AM to 11:30 PM

### Auction Details

On Site 30/05/2026 at 11:45 AM

### Property Features

- Double lock up garage
- Built in robes
- Gourmet designer kitchen
- Reverse cycle a/c

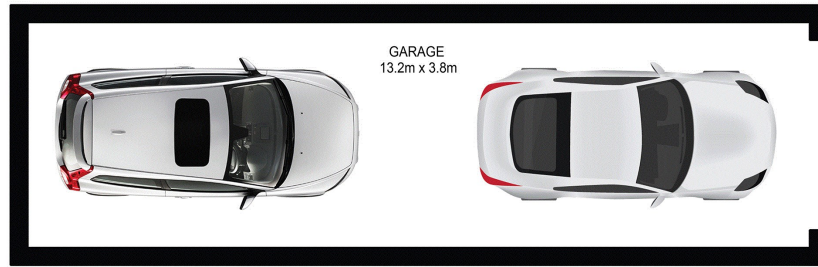
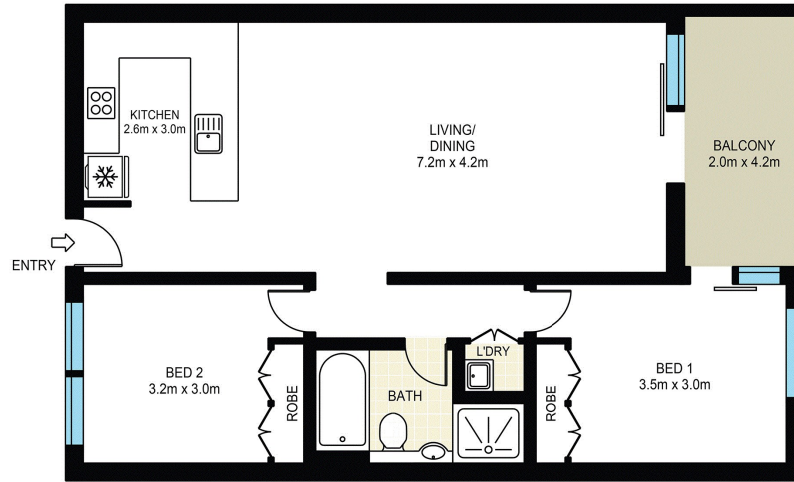
### Listed By



Ilana Goldberg  
Phone: (02) 8345 8355  
Mobile: 0409 123 777



Floorplan



INT: 129 m<sup>2</sup>  
EXT: 8 m<sup>2</sup>



This Floor Plan was prepared by WWW.CRYINGOUTLOUD.COM.AU for illustration purposes only. This document does constitute and part of an offer or contract. Dimensions are approximate only. Copyright © Crying Out Loud. All Rights Reserved.

16/68 Wentworth Street, Randwick

 2
  1
  2