

15 Schaber Rd, Connellan, NT 0873

\$1,450,000

House 5  2 



## Home is Where the Heart Is

Set on an expansive 1.97 hectares in tightly held Connellan, this remarkable residence delivers a rare blend of timeless character, substantial infrastructure and true Territory lifestyle living.

### Open for Inspection

Sun, 19 Apr 2026 - 12:45 PM to 1:30 PM

Privately positioned amongst established trees and manicured grounds, the home itself is rich in warmth and charm with soaring ceilings, light-filled interiors and a layout designed for both family living and entertaining.

A beautifully appointed country-style kitchen forms the heart of the home, flowing effortlessly into multiple living zones, while generous bedrooms provide peaceful retreats with tranquil garden outlooks. This is more than just a house, it is a place where families can grow, create memories, and truly feel at home.

Upstairs, a wraparound verandah captures sweeping views across the property, the perfect place to unwind and take in the serenity of your surroundings.

Outdoors is where this property truly comes into its own. A sparkling in-ground pool, expansive undercover entertaining area with bar, and lush, established gardens create a private resort-style setting ideal for year-round enjoyment. It's a space where kids can run freely, weekends are spent entertaining, and lifelong memories are made — the kind of property every family dreams of.

Adding to its appeal is the substantial high-clearance shed and workshop with multiple bays, offering outstanding versatility for tradies, business owners or those with serious storage needs. With ample hardstand, vehicle space and room to expand, the property caters effortlessly to both lifestyle and functionality.

Opportunities of this scale and calibre in Connellan are exceptionally rare. Offering space, privacy, infrastructure and timeless appeal, this is a property that delivers not just a home but a lifestyle perfectly suited to raising a family.

### Property Highlights:

- 5 spacious bedrooms
- 2 bathrooms
- Up to 11–13 vehicle accommodation
- Approx. 1.97ha of established grounds
- Multiple living areas
- Resort style swimming pool

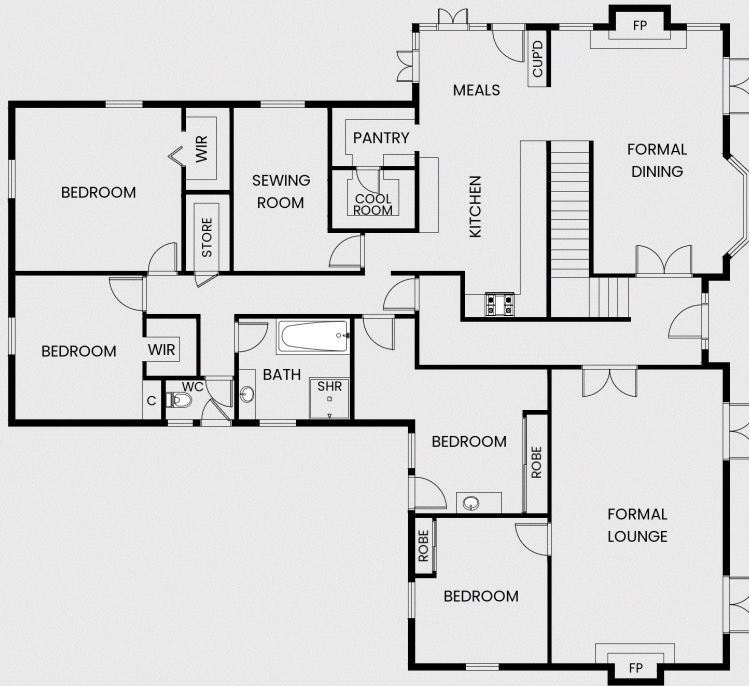
### Listed By

Doug Fraser  
Phone: (08) 8950 6333  
Mobile: 0418 897 768

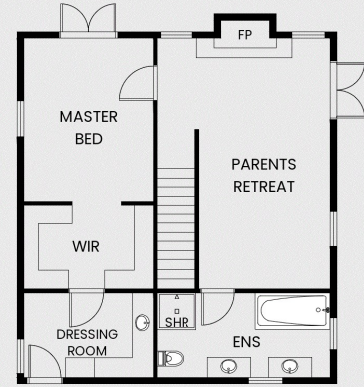


Floorplan

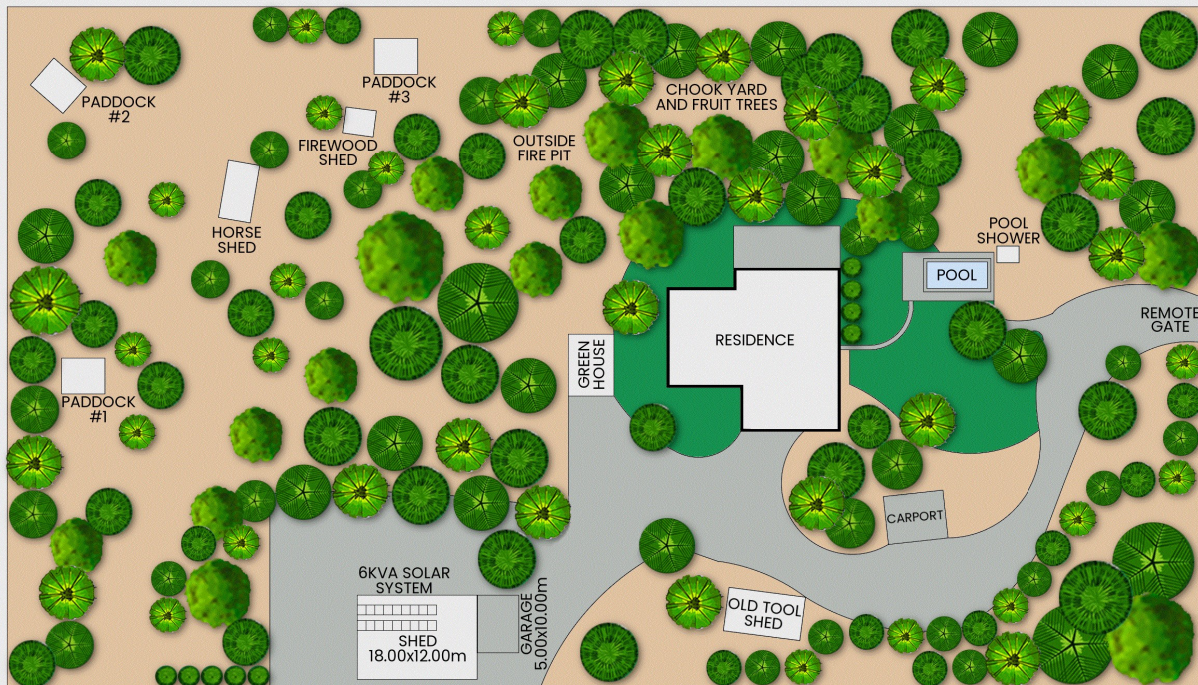
# 15 Schaber Road, Connellan NT



**GROUND FLOOR**



**FIRST FLOOR**



**SITE PLAN**

This floor plan including furniture, fixture measurements and dimensions are approximate and for illustrative purposes only. The Agent gives no guarantee, warranty or representation as to the accuracy and layout. All enquiries must be directed to the agent, vendor or party representing this floor plan.

