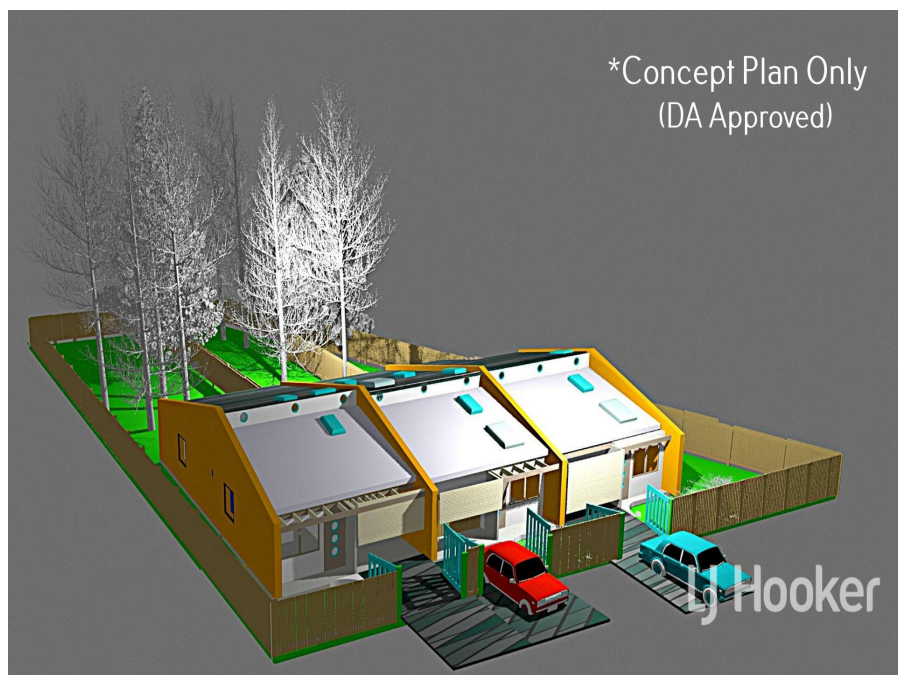


14 Amethyst St, Tingha, NSW 2369

\$95,000

Residential Land



### Affordable Living Development Opportunity

Located approximately 30km South East of Inverell in the village of Tingha this represents an opportunity with DA plans approved

- Approximately 986 square metres level block
- Located in the heart of the Tingha Village
- DA approved for 3 x 3 bedroom Townhouses
- All town services available
- Approx. 250m walk to Pub, Pharmacy ,bus stop, Post office and cafe

**Open for Inspection**

By Appointment.

For further information or to arrange an inspection, call Sean Taylor on 0409 666 854

Disclaimer: All information contained is gathered from relevant third-party sources. We cannot guarantee or give any warranty about the information provided. Interested parties must rely solely on their own enquiries

#### Listed By

John Devlin  
Phone: (02) 6721 0215  
Mobile: 0488 999 364

