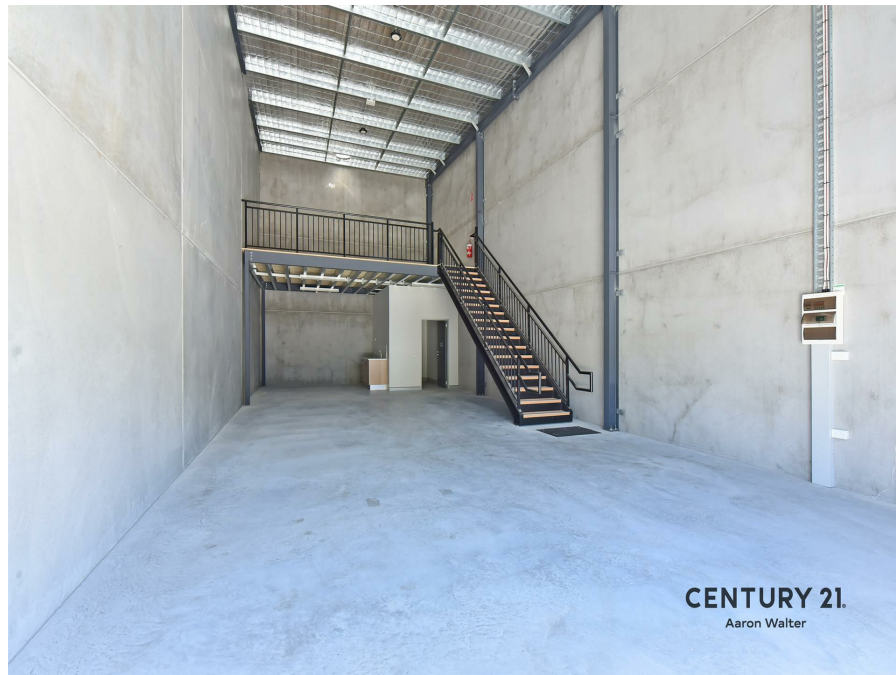


14/48 Riverside Dr, Mayfield West, NSW 2304

Leased - \$650

Warehouse



## BRAND NEW, PERFECT SIZE & PERFECT LOCATION!!

PLEASE register for all inspections to ensure you are notified of any changes or cancellations

\* Ready for occupation so hurry to be the first tenant!!

\* Brand new Industrial Unit in fenced and secure complex, Zoned IN2 - Light Industrial

\* Close to shops, Newcastle CBD & Harbour, Minutes to New England Hwy and M1 Motorway

\* Includes approximately 96m2 ground floor plus approximately 30m2 mezzanine - ( Total floor area approximately 126m2 )

\* Kitchenette and bathroom facilities on ground floor, full concrete panel construction

\* Remote high roller door ( 4200mm x 4800mm ), pedestrian access and side door

\* High bay LED lighting and 2 x onsite parking spaces, NBN Connectivity and never been occupied

**Open for Inspection**

By Appointment.

**\*\*To view our properties, you must register for an inspection time. To register either click the book inspection button or email agent to be directed to book. If you do not register, we cannot notify you of any changes, new times or cancellations.\*\*** A link to apply online will be generated after your inspection, we do not accept applications prior to inspection.

### Listed By

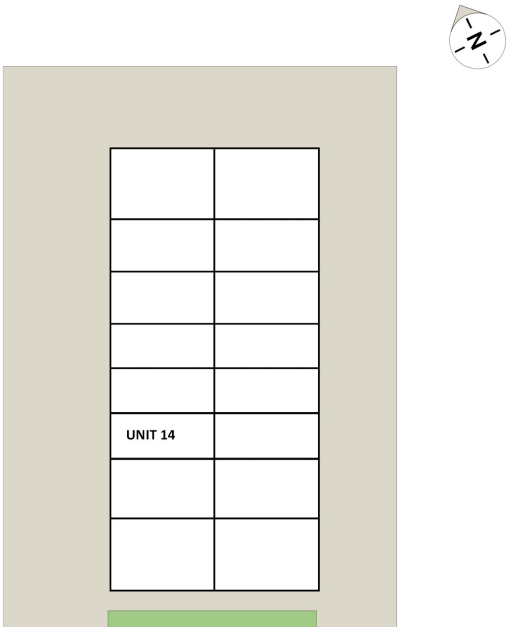
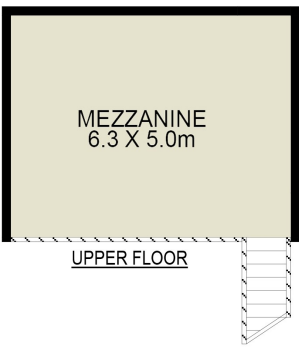
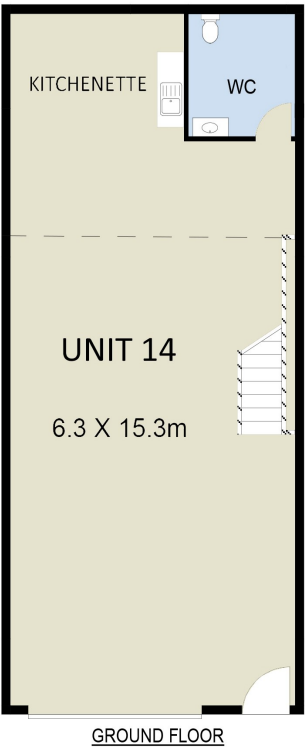
The Office

Phone: (02) 4950 6111



Floorplan

STELLAR MEDIA Measurements and direction points in this floor plan/ site plan are approximate and only meant as a guide. No representations or warranties are given or intended.



**CENTURY 21.**  
Aaron Walter

Unit 14/48 Riverside Drive Mayfield West