
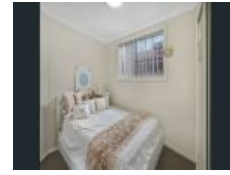


13A Junee St, Gregory Hills, NSW 2557

\$475

Duplex 1  1 



## ONE BEDROOM GRANNY FLAT

One-bedroom granny flat offers a low-maintenance living, featuring a spacious bedroom with a built-in wardrobe, an internal laundry, and a open-plan living and kitchen area. Split system air conditioning, Private side access entry, Separate electricity meter, Perfect for a single person or couple

**Open for Inspection**

By Appointment.

**Listed By**  
Property Management

