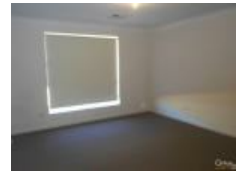


137 Shirley St (St Eyre Estat , Port Augusta West, SA 5700**\$360**House 4  2 **137 Shirley St (St Eyre Estate), Port Augusta West**

4brs, ensuite, BIR, family room, lounge and dining room, double carport, alfresco area, ducted a/c, corner block, landscaped with lawn area *PETS ON APPLICATION - OWNER APPROVAL REQUIRED* no postal service to this Estate.

Open for Inspection

By Appointment.

Listed By

The Office

Phone: (08) 8642 3322

