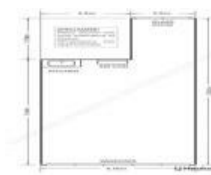


13/1134 Gold Coast Hwy, Palm Beach, QLD 4221

Under Contract

Office Suite



## AFFORDABLE FIRST FLOOR OVERLOOKING GOLD COAST HIGHWAY

Centrally located in the heart of Palm Beach First floor office space.

- 55m2 (approx.) first floor office
- Zone: Centre
- Transport at the front door
- Kitchenette
- Freshly painted

Open for Inspection

By Appointment.

Strategically positioned in Palm Beach CBD just 100m (approx.) to the beach and direct access to the Gold Coast Highway which provides extremely high profile.

Palm Beach has quickly become one of Queensland's most sought-after beachside locations nestled between Talleggera and Currumbin Creek. Undergoing extensive gentrification, the area is fast becoming a premiere beachside suburb. The location is serviced by an extensive road network and has easy access to both the Gold Coast Highway and the M1 (Pacific) Motorway.

For more information or to arrange your inspection, please contact listing agent Jamie Holmes 0415 372 903 or Tara Imlach 0452 418 343.

### Disclaimer:

All information (including but not limited to the property area, floor size, price, address and general property description) is provided as a convenience to you, and has been provided to LJ Hooker by third parties. LJ Hooker is unable to definitively confirm whether the information listed is correct or 100% accurate. LJ Hooker does not accept any liability (direct or indirect) for any injury, loss, claim, damage or any incidental or consequential damages, including but not limited to lost profits or savings, arising out of or in any way connected with the use of any information, or any error, omission or defect in the information, contained on the Website. Information contained on the Website should not be relied upon and you should make your own enquiries and seek legal advice in respect of any property on the Website. Prices displayed on the Website are current at the time of issue, but may change.

### Listed By

The Office  
Phone: (07) 5534 4033

The Office  
Phone: (07) 5534 4033

