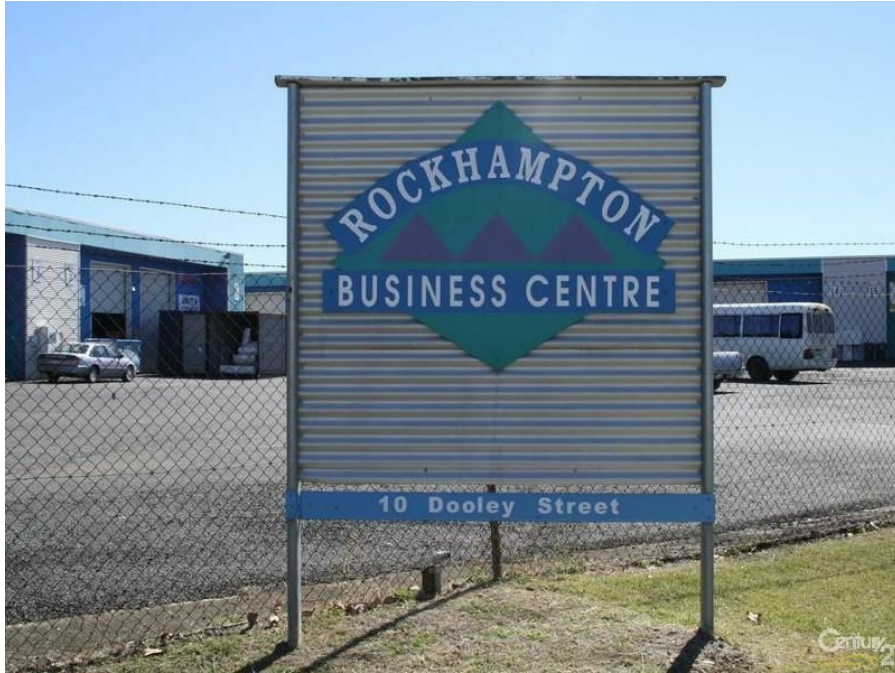


13/10 Dooley St, Park Avenue, QLD 4701

\$20,570 PA + GST + O/Gs

Office Suite



FOR LEASE - 187 m2

Located in the North Rockhampton Commercial Hub is this Commercial Building of 187 m2.

**Open for Inspection**

By Appointment.

- \* building size of 187 m2.
- \* set in the Rockhampton Business Centre.
- \* ample off street parking.
- \* close to all amenities.
- \* minutes to highway one.
- \* great for start up business.

**Listed By**

The Office  
Phone: (07) 4922 5522

