

123A Hume Boulevard Bvd, Killarney Vale, NSW 2261

Sold - 15/07/2024

House 2 1 1 1



Entry Level Opportunity!!

Be quick to inspect this solidly built original brick and tile Killarney Vale home.

Situated on Hume Blvd occupying a commanding position capturing an easterly aspect, making the front porch the idea place to enjoy a morning coffee as you overlook the lush and generous front lawn, that could lend itself to being fenced off making for a beautiful private yard.

Step inside to:

- * Large kitchen and dining area with timber cabinetry and ceramic cook top.
- * Generous main living area.
- * Two bedrooms, both with built in robes.
- * Original bathroom that presents well for its age.
- * Internal laundry.
- * Sunroom.
- * Bonus multipurpose room, that may lend itself to being set up as a study.

The rear offers a nice patch of lawn, and space to hang the washing.

Parking is catered for via a single lock up garage.

Hume Blvd is a quality curb and gutter street smooth with a smooth Asphalt Road surface.

This home presents itself as an unbelievable entry level opportunity to the Killarney Vale market, and lends itself to the astute purchaser to add value through renovation.

The location:

- * 2.6 kms to Shelly Beach Golf Course.
- * 260 m to Brooke Avenue Primary School.
- * 2.1 kms to Tuggerah Lakes Secondary College

Listed By

Trevor McDougall

Phone: (02) 4389 1722

Mobile: 0410 491 755

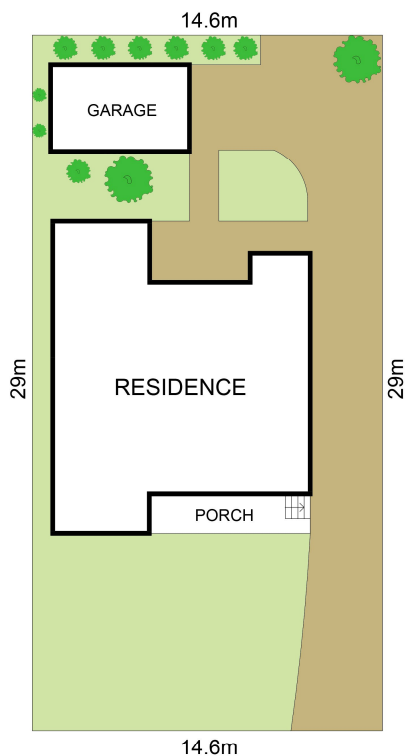
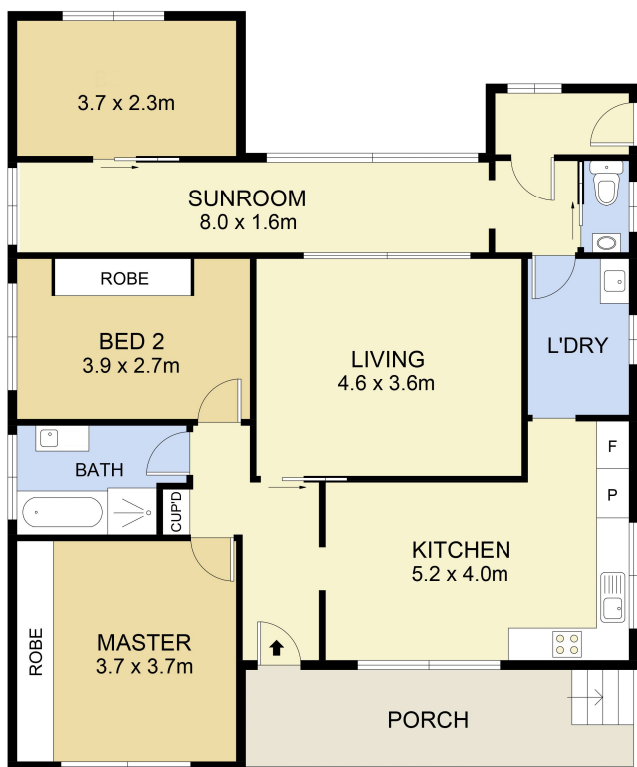
Belinda Bond

Open for Inspection

By Appointment.



Floorplan



SITE PLAN

0 1 2 3 4 5 SCALE (METRES)

Scale in metres. Indicative only. Dimensions are approximate. All information contained herein is gathered from sources we believe to be reliable. However we cannot guarantee its accuracy and interested persons should rely on their own enquiries



INT : 101 m²
EXT : 11 m² NOT TO SCALE

123a Hume Blvd, Killarney Vale