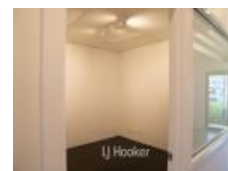
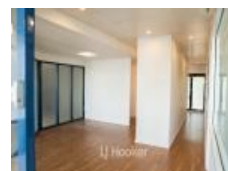


12/31-33 Dunn Bay Rd, Dunsborough, WA 6281

CONTACT AGENT

Office Suite



## Ground Floor Commercial Suite in the Dunn Bay Centre

An excellent opportunity to secure Unit 12 at the Dunn Bay Centre, a well-positioned commercial suite right in the heart of Dunsborough's thriving town centre.

**Open for Inspection**

By Appointment.

This ground floor suite is ideally suited to professional services, consulting rooms, boutique retail or wellness practices seeking a central location with a professional surrounding environment. The suite also benefits from two allocated onsite parking bays, providing convenient access for both staff and clients.

Positioned to the rear of the complex, the suite enjoys a pleasant outlook across the Djiljit Mia Community Gathering Place, with views through native vegetation creating a calm and welcoming setting. The nearby nature play area can also be a convenient feature for clients visiting with children.

This spacious suite is well presented and available immediately, offering a practical layout suitable for a range of business uses. The space can be utilised as it currently stands, while still allowing flexibility for a tenant to personalise or adapt the layout to suit their specific requirements.

### Property Features

- ? 73sqm (approx.) ground floor commercial suite
- ? Located within the popular Dunn Bay Centre
- ? Quiet rear position overlooking Djiljit Mia Community Gathering Place
- ? Two allocated onsite parking bays
- ? Suitable for professional services, consulting or boutique operators
- ? Kitchenette with sink and overhead cabinetry
- ? Split system air conditioning
- ? Flexible layout with possibility for tenant fit-out
- ? Available immediately

Commercial suites in this central Dunsborough location are tightly held, making this a great opportunity to establish your business within a well-known local precinct.

Rent: Contact Agent (Base rent plus outgoings plus GST where applicable.)

### Listed By

The Office  
Phone: (08) 9791 6880

