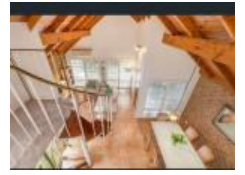


11/1 Kelda St, Robertson, QLD 4109

Leased - \$595

Unit 2  1  1 



SPACIOUS UNIT IN PERFECT LOCATION

This lovely unique character unit that's located in one of the most highly sought after gated estates in the area won't last long. Only minutes to Sunnybank Shopping and Restaurant Hub, Westfield Garden City and Griffith University Nathan Campus and in the school catchment for Robertson State School and Macgregor State High School

Open for Inspection

By Appointment.

Features include:

- 2 spacious bedrooms with built-ins and ceiling fan in main room
- Open plan lounge and dining
- Air-conditioning in the lounge/dining area
- Beautiful spiral stairs leading to a large loft and separate room upstairs
- Roomy bathroom with bath, corner shower and a separate toilet
- Unit features a garden out front and private courtyard out the back
- Single car lockup and room for a second car to be parked separately

Complex features:

- Pool
- BBQ areas
- Visitor parking

To arrange an inspection, please contact Sarah Morgan today on 07 2803 3838 or click on the link below to register your details for any upcoming open home times.

****Full terms and conditions of tenancy agreement available from the office.**

**** Disclaimer:** Whilst every care is taken in the preparation of the information contained in this marketing, MPM Property will not be held liable for any errors in typing or information. All interested parties should rely upon their own enquiries in order to determine whether or not this information is in fact accurate.

Listed By

Rebecca Hazel
Phone: (07) 3812 3212
Mobile: 0414 166 673

