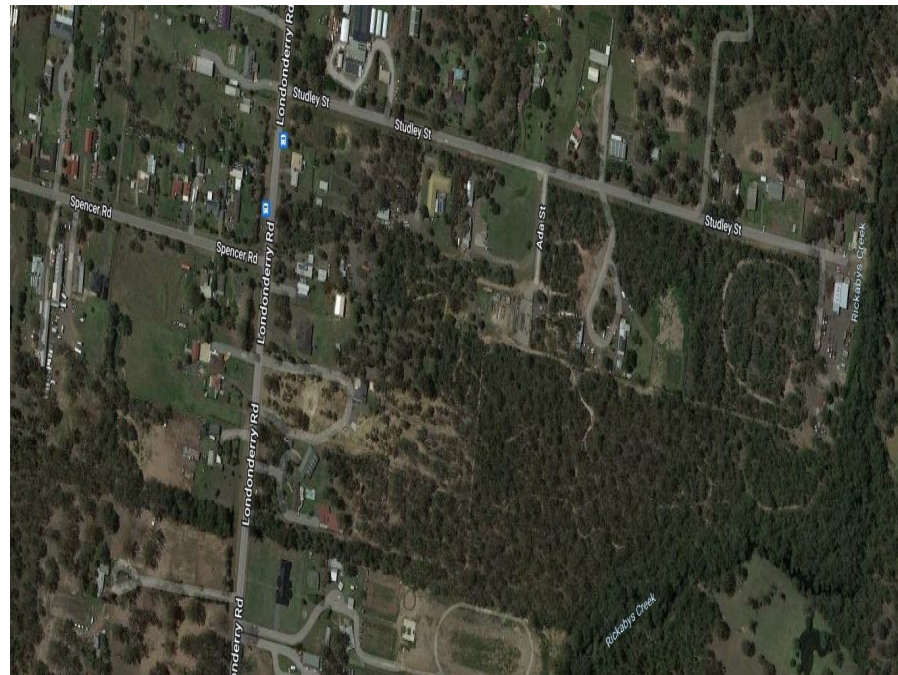


## 100 Emily St, Londonderry, NSW 2753

**Leased - \$40,000**

Commercial Land



### Available yard - ready to go

Large Open flat yard with easy to access to storage yard and located just off Londonderry Rd.

- \* Fully gated and private.
- \* 24 hour access
- \* From 1000 to 2000 sqm available

**Open for Inspection**

By Appointment.

### Listed By

Gihad Chami  
Phone: (02) 8030 5660  
Mobile: 0405 125 588

